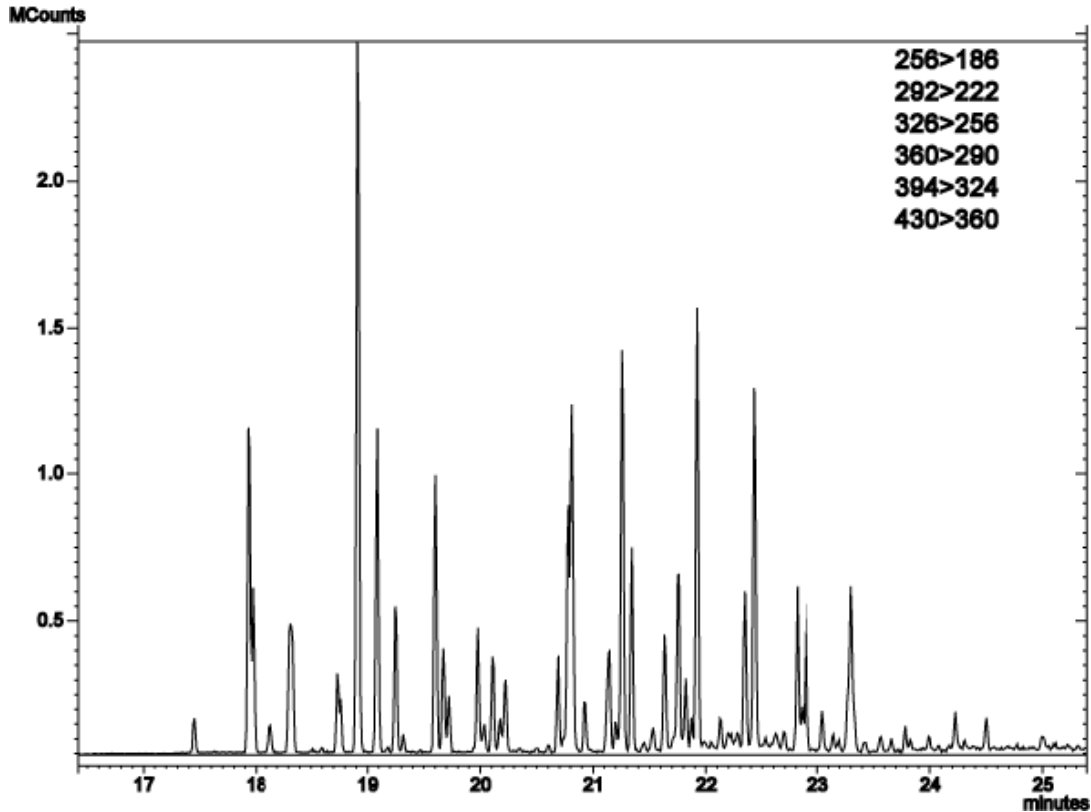


Application of the PCB out of the insulating oil after cleaning up



System : GC/MSMS PAC795 OPTIC3
 Column : InertCap 5MS/Sil 0.25mmI.D. × 30m df=0.25µm
 Column Temp. : 50°C(3min)→15°C/min→280°C
 Carrier Gas : He
 Injection : DMI 2µL
 60°C→10°C/sec→280°C
 Detection : MS/MS Collision Gas: Ar
 Sample : Insulating oil