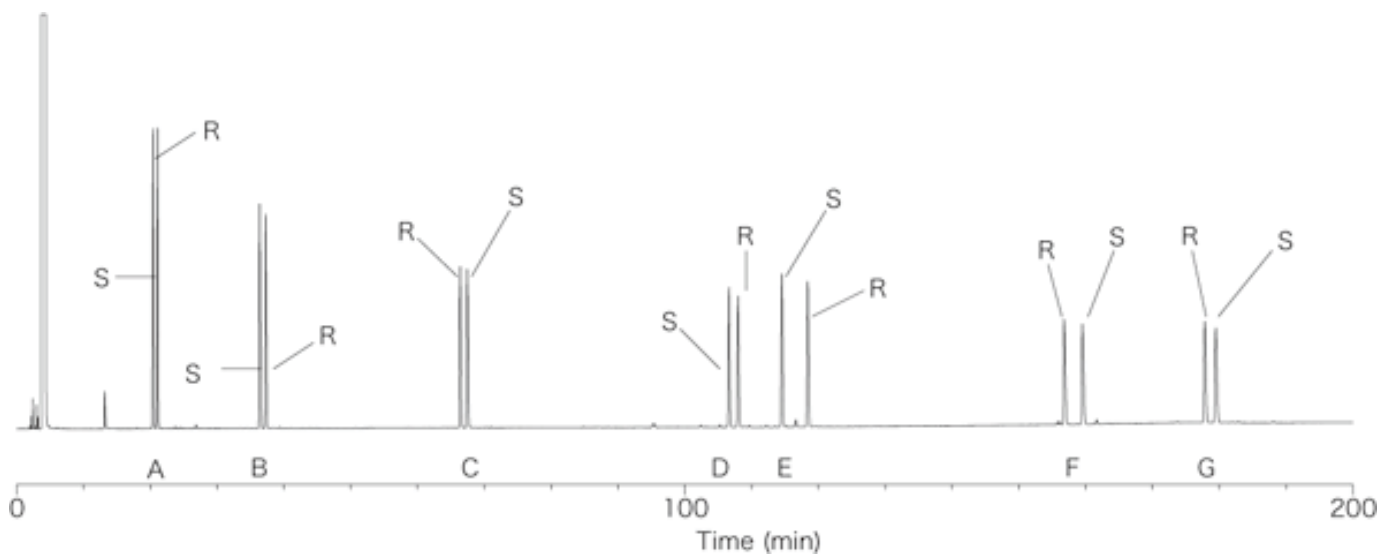


Optical isomers



System : GC/FID
 Column : InertCap CHIRAMIX
 Column Temp. : 60°C → 0.7°C/min → 180°C (50min)
 Carrier Gas : He 70kPa
 Injection : Split 1 : 50 0.4µL
 Detection : FID
 Sample : Optical isomers

Solutes : 1. A : α - pinene
 2. B : limonene
 3. C : linalool
 4. D : α - damascone
 5. E : α - ionone
 6. F : δ - jasmine lactone
 7. G : γ - dodeca lactone