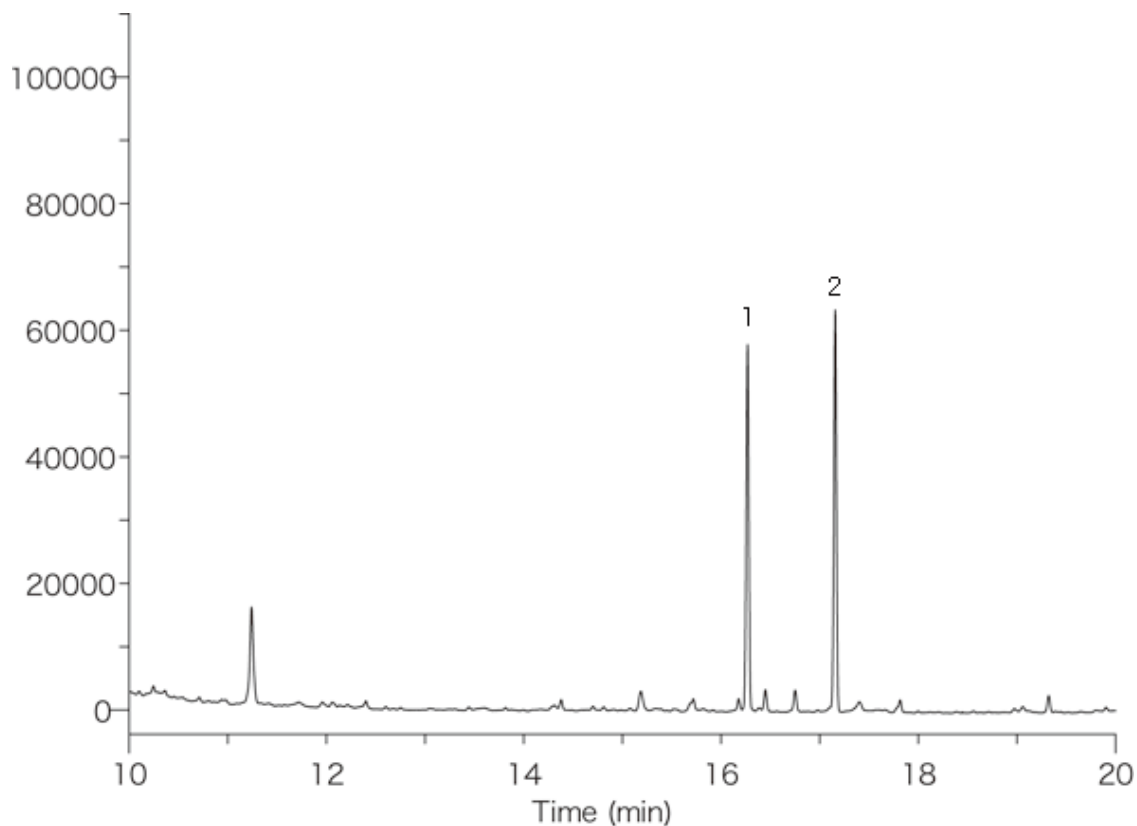


D-glucose-TMS



System : GC/FID
 Column : InertCap 1
 0.25mmI.D. × 30m df=0.25µm
 Column Temp. : 100 °C(2min)→10 °C/min→300 °C
 Carrier Gas : He 80kPa
 Detection : FID
 Sample : D-glucose-TMS

Solutes : 1. α - D-glucose-TMS
 2. β - D-glucose-TMS