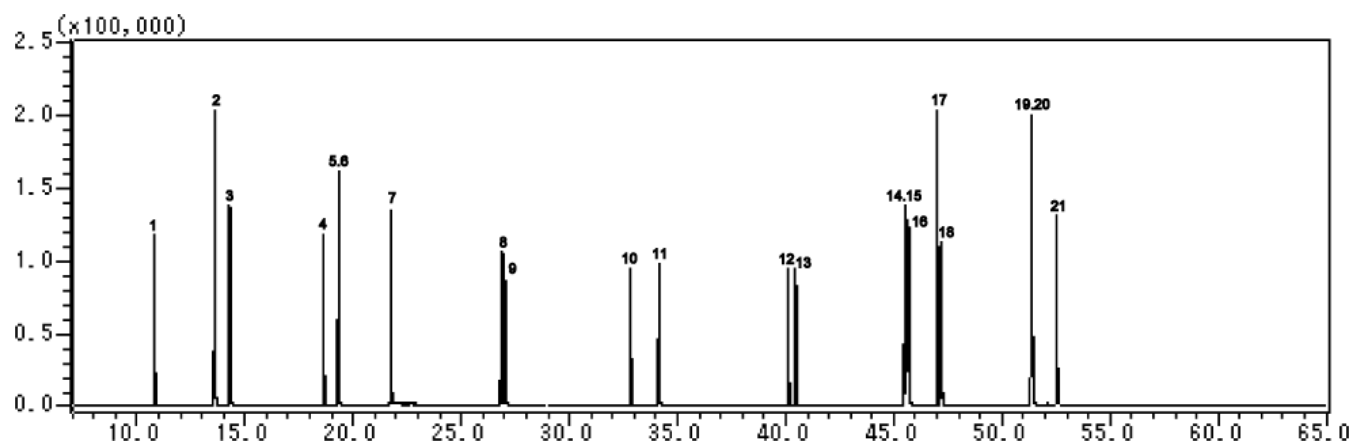


Polycyclic aromatic hydrocarbons



System : GC/MS
 Column : InertCap 17MS
 0.25mmI.D. × 30m df=0.25µm
 Column Temp. : 80 °C(3min)→5 °C/min→340 °C(5min)
 Detection : MS
 Sample : Polycyclic aromatic hydrocarbons each 10mg/L

Solutes : 1. Naphthalene
 2. 2-Methylnaphthalene
 3. 1-Methylnaphthalene
 4. Acenaphthylene
 5. Acenaphthene
 6. Biphenyl
 7. Fluorene
 8. Phenanthrene
 9. Anthracene
 10. Fluoranthene
 11. Pyrene
 12. Chrysene
 13. Benzo[a]anthracene
 14. Benzo[b]fluoranthene
 15. Benzo[k]fluoranthene
 16. Benzo[e]pyrene
 17. Benzo[a]pyrene
 18. Benzo[j]fluoranthene
 19. Dibenz[a,h]anthracene
 20. Benzo[g,h,i]perylene
 21. Indeno[1,2,3-cd]pyrene