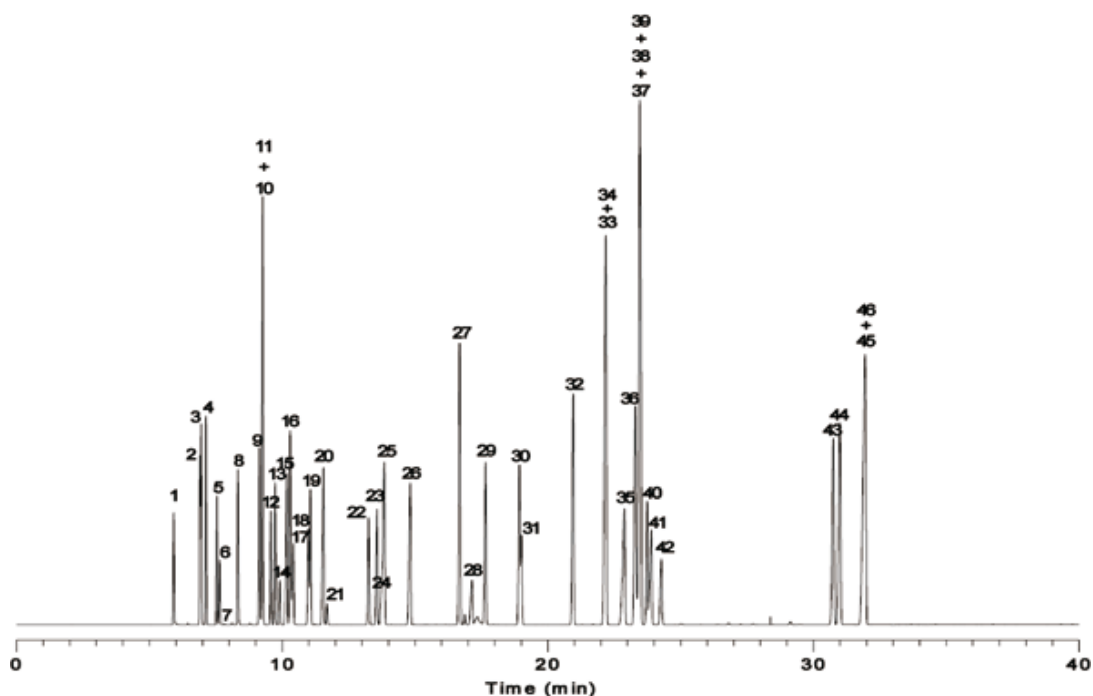


Organic solvents



System	: GC/FID	Solutes : 1. Methanol	26. i-Amyl alcohol
Column	: InertCap 5 0.25mm I.D. × 60m df=0.4µm	2. Acetone	27. Toluene
Column Temp.	: 40°C(5min) → 4°C/min → 230°C(5min)	3. i-Propanol	28. N,N-Dimethyl formamide
Carrier Gas	: He 130kPa	4. Ethyl ether	29. Methyl-n-butyl ketone
Injection	: Split 100mL/min 1µL 250°C	5. Methyl acetate	30. n-Butyl acetate
Detection	: FID Range 10 ¹ 250°C	6. Dichloromethane	31. Tetrachloroethylene
Sample	: Organic solvents Mixed evenly	7. Carbon disulfide	32. Chlorobenzene
		8. trans-1,2-Dichloroethylene	33. m-Xylene
		9. Methyl ethyl keton	34. p-Xylene
		10. 2-Butanol	35. Cyclohexanol
		11. n-Hexane	36. Styrene
		12. cis-1,2-Dichloroethylene	37. Cyclohexanone
		13. Ethyl acetate	38. 1-Methylcyclohexanol
		14. Chloroform	39. o-Xylenel
		15. i-Butanol	40. Cellosolve acetate
		16. Tetrahydrofuran	41. Butyl cellosolve
		17. Methyl cellosolve	42. 1,1,2,2-Tetrachloroethane
		18. 1,1,1-Trichloroethane	43. o-Dichlorobenzene
		19. 1,2-Dichloroethane	44. o-Cresol
		20. n-Butanol	45. m-Cresol
		21. Carbon Tetrachloride	46. p-Cresol
		22. Trichloroethylene	
		23. 1,4-Dioxane	
		24. Ethyl cellosolve	
		25. n-Propyl acetate	