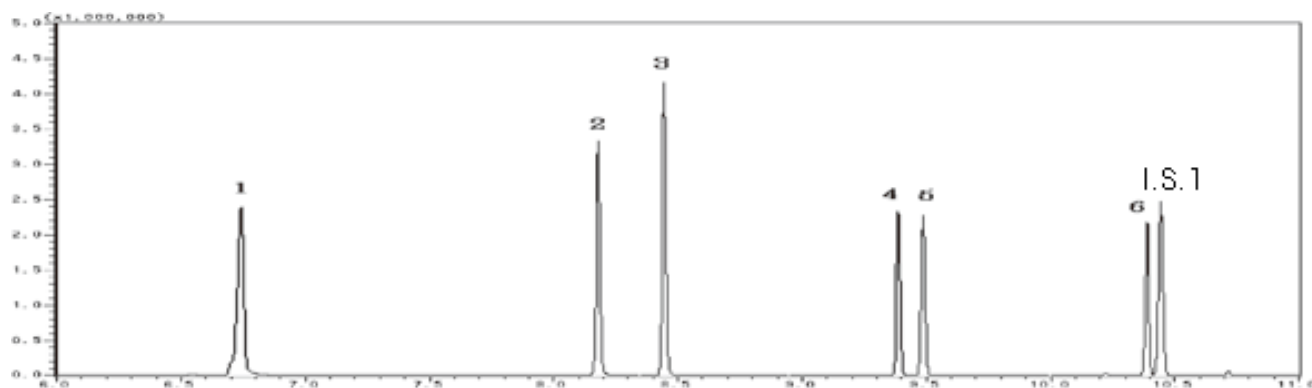


Phenols



System : GC/MS
 Column : InertCap 5MS/Sil
 0.25mmI.D. × 30m df=0.25µm
 Column Temp. : 50°C(3min)→20°C/min→200°C→10°C/min→280°C(7min)
 Injection : Splitless 1µL
 250°C
 Detection : MS SIM
 250°C
 Sample : Phenols

Solutes : 1. Phenol
 2. 2-Chlorophenol
 3. 4-Chlorophenol
 4. 2,6-Dichlorophenol
 5. 2,4-Dichlorophenol
 6. 2,4,6-Trichlorophenol
 (TMS Deriv. by BSTFA)
 I.S.1 : Acenaphtene-d10