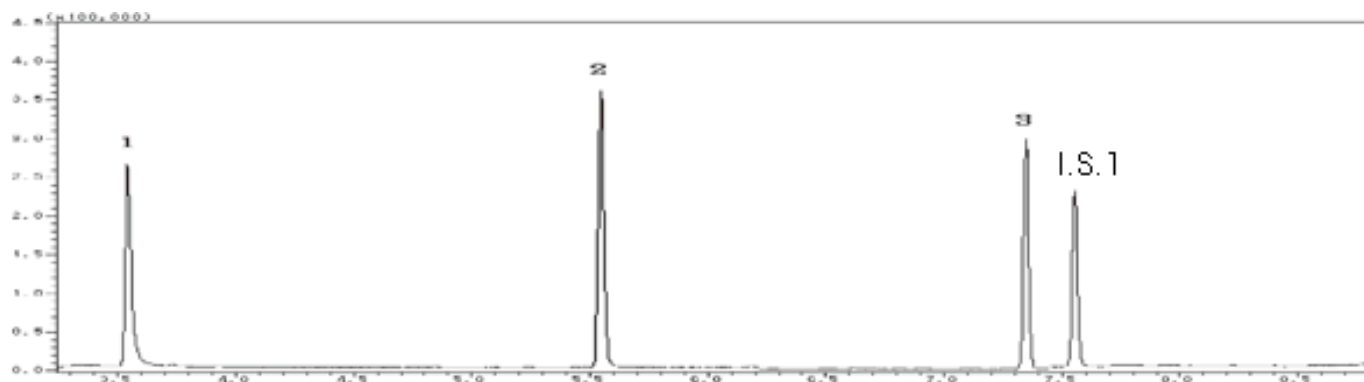


Halogenoacetic acid



System : GC/MS
 Column : InertCap 5MS/Sil
 0.25mm I.D. × 30m df=0.25µm
 Column Temp. : 40°C(4min)→10°C/min→200°C(2min)
 Injection : Split 1 : 2.5 220°C
 Detection : MS SIM
 Sample : Halogenoacetic acid

Solutes : 1. Chloroacetic acid
 2. Dichloroacetic acid
 3. Trichloroacetic acid
 (Methylester Deriv. by Diazomethane sol.)
 I.S.1 : 1,2,3-Trichloropropane