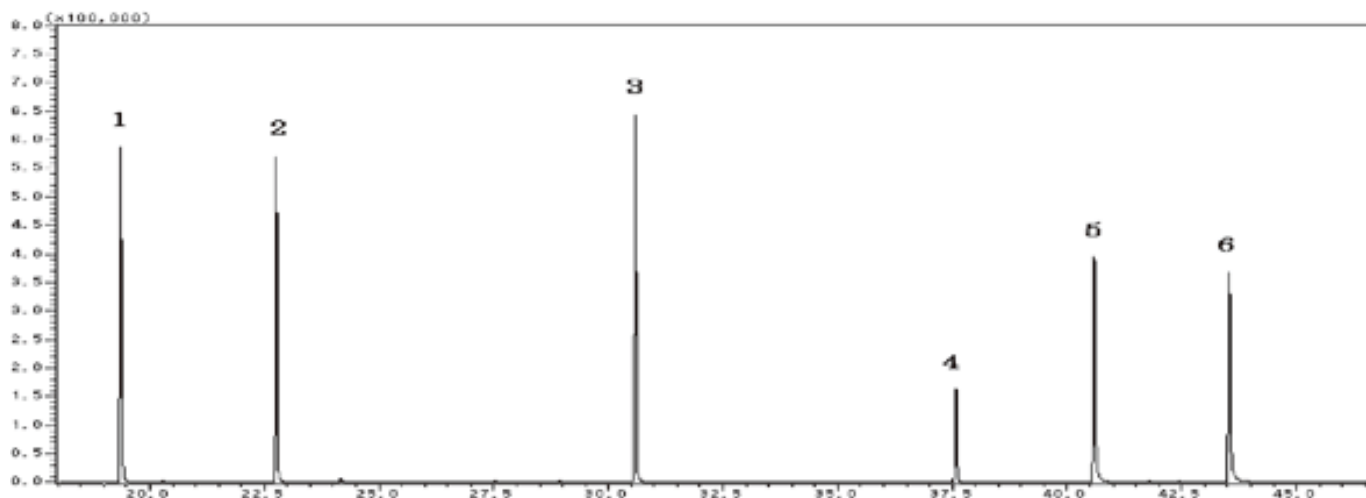


Phthalate ester



System : GC/MS
 Column : InertCap 5MS/Sil
 0.25mm I.D. × 30m df=0.25µm
 Column Temp. : 60°C(3min) → 5°C/min → 280°C(3min)
 Injection : Splitless 1µL
 280°C
 Detection : MS SIM
 Sample : Phthalate esters

Solutes : 1. Dimethylphthalate
 2. Diethylphthalate
 3. Di-n-butylphthalate
 4. Butylbenzylphthalate
 5. Di(2-ethylhexyl)phthalate
 6. Dioctylphthalate