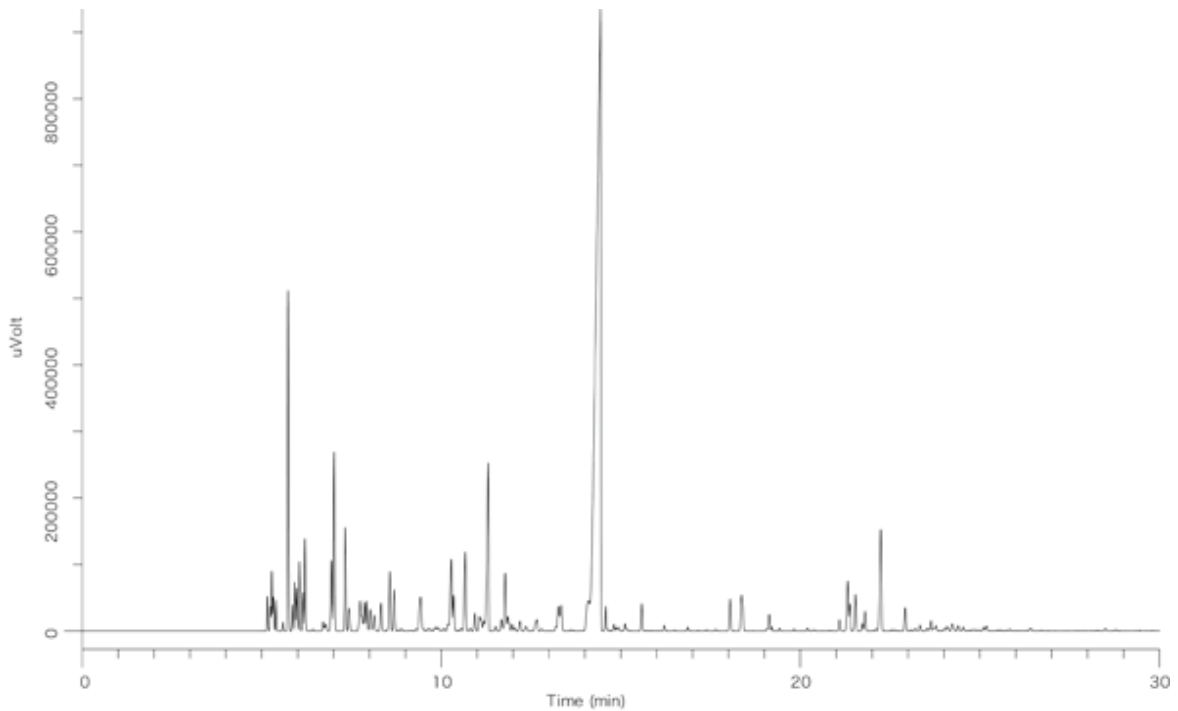


High-octane gasoline



System	: GC/FID
Column	: InertCap 1 0.25mmI.D. × 60m df=0.25µm
Column Temp.	: 40°C(10min)→5°C/min→250°C(8min)
Carrier Gas	: He 140kPa
Injection	: Split 1:100 1µL 250°C
Detection	: FID Range 10 ¹
Sample	: Premium gasoline