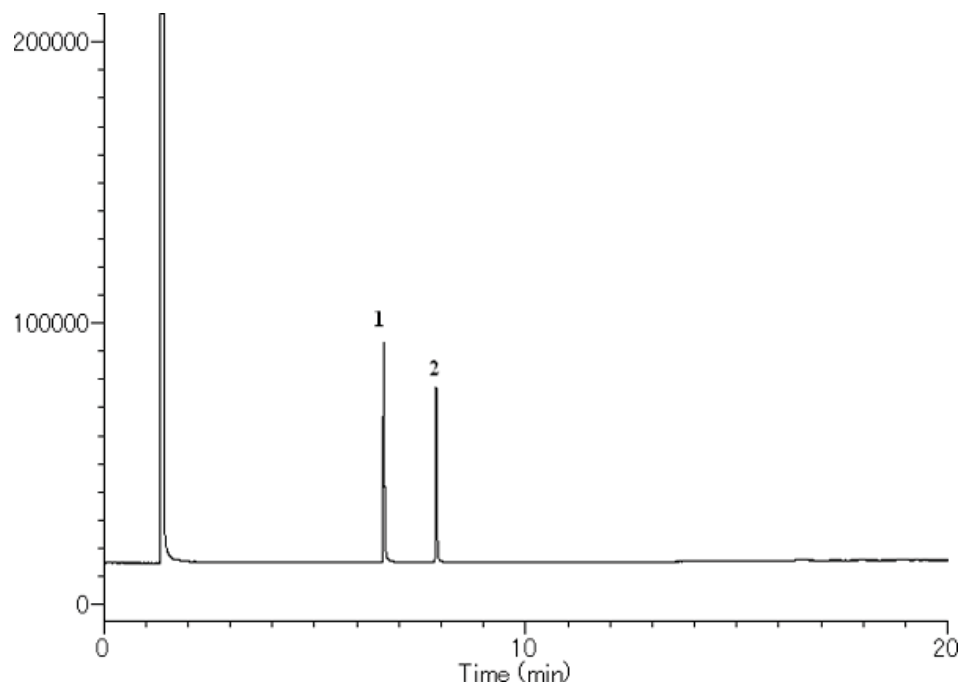


Glycerin, Diethylene glycol



System : GC/FID
 Column : InertCap1701 0.32mmI.D. × 30m df=1.0µm
 Column Temp. : 100°C→7.5°C/min→220°C(4min hold)
 Carrier Gas : 100kPa
 Injection : Split1:20 220°C 1µL
 Detection : FID Range10⁰ 250°C
 Sample : each 0.5mg/mL

Solutes : 1. Diethylene glycol
 2. Glycerin