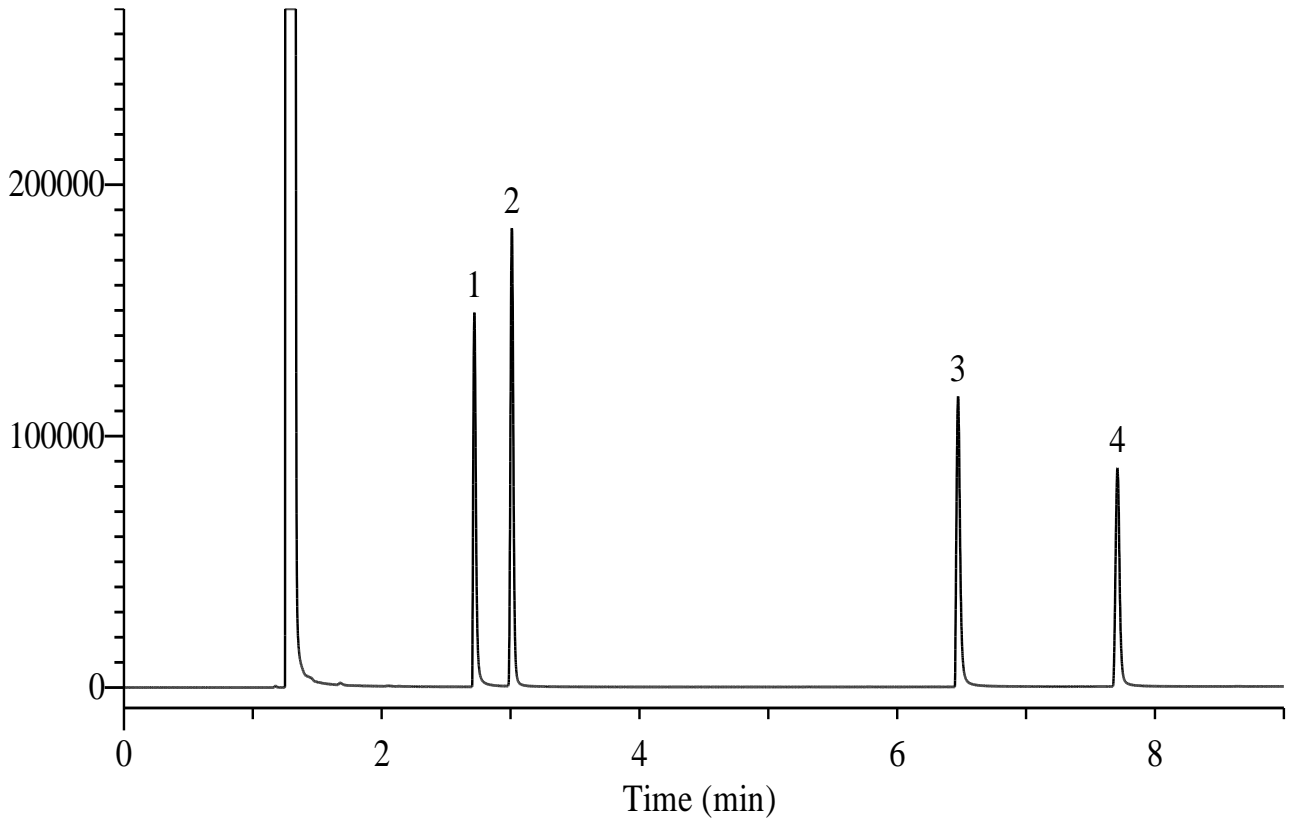


## Glycols & Glycerine



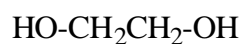
### Conditions

**System** : GC/FID  
**Column** : InertCap 1701  
 0.32 mm I.D. x 30 m df = 1.0  $\mu$ m  
**Col. Cat. No.** : 1010-61245  
**Col. Temp.** : 100 °C (5 min hold) - 7.5 °C/min - 220 °C  
**Carrier Gas** : He 100 kPa  
**Injection** : Split flow 53.6 mL/min  
 220 °C  
**Detection** : FID Range 10<sup>0</sup>  
 250 °C  
**Sample Size** : 500  $\mu$ g/mL in Methanol  
 1  $\mu$ L

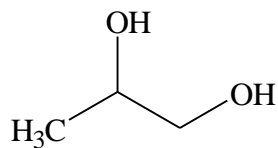
**Analyte** : 1. Ethylene glycol  
 2. Propylene glycol  
 3. Diethylene glycol  
 4. Glycerine

## Glycols & Glycerine

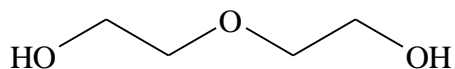
### Chemical Structures



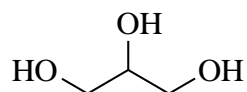
1. Ethylene glycol



2. Propylene glycol



3. Diethylene glycol



4. Glycerine