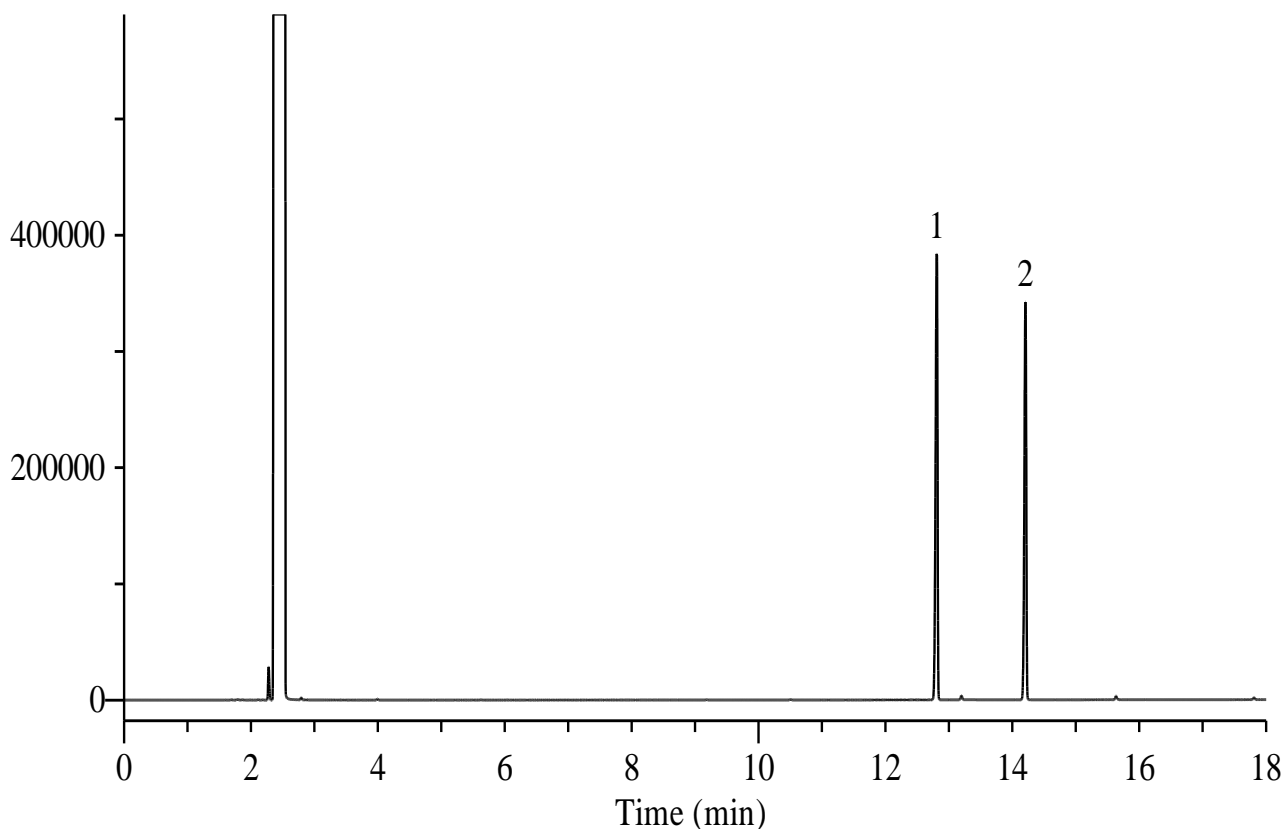


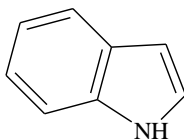
Indole, Skatole



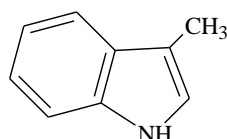
Conditions

System : GC/FID
Column : InertCap 5
 0.25 mm I.D. x 30 m df = 0.25 μ m
Col. Cat. No. : 1010-18142
Col. Temp. : 40 °C (1 min hold) - 10 °C/min - 200 °C
Carrier Gas : He 100 kPa
Injection : Split flow 67 mL/min
 250 °C
Detection : FID Range 10⁰
 250 °C
Sample Size : 1000 μ g/mL in Ethyl acetate
 1.0 μ L

Analyte : 1. Indole
 2. Skatole



1. Indole



2. Skatole