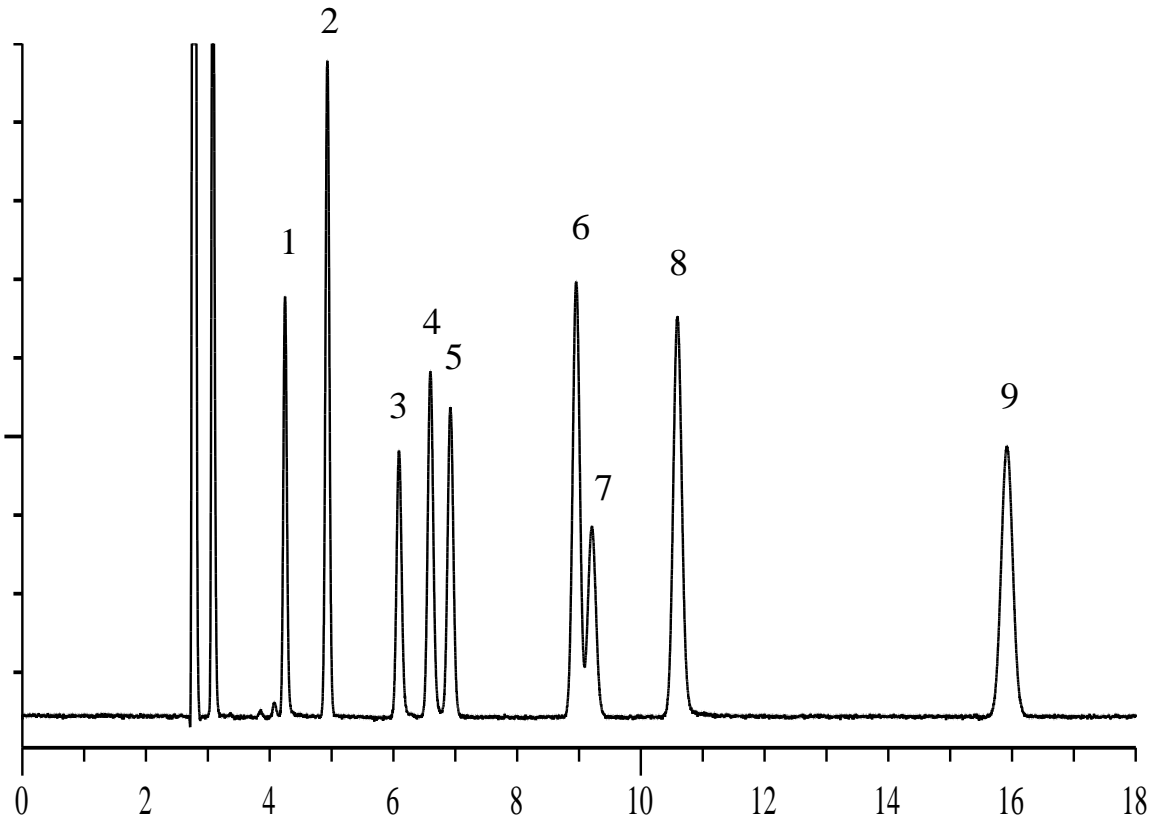


Solvents



Conditions

System : GC/PID
Column : InertCap 1
 0.53 mm I.D. x 30 m df = 5.00 μm
Col. Cat. No. : 1010-11449
Col. Temp. : 80 °C
Carrier Gas : He 20 kPa
Injection : Split flow 15 mL/min
 200 °C
Detection : PDD/PID mode
 Discharge Gas Inlet 2% Ar/He 30 mL/min
 200 °C
Sample Size : 200-500ppm in Air
 200 μL

Analyte:

1. Acetone
2. Dichloromethane
3. 2-Hexanone (MEK)
4. Ethyl acetate
5. Chloroform
6. Benzene
7. Carbon tetrachloride
8. 1,4-Dioxane
9. Toluene