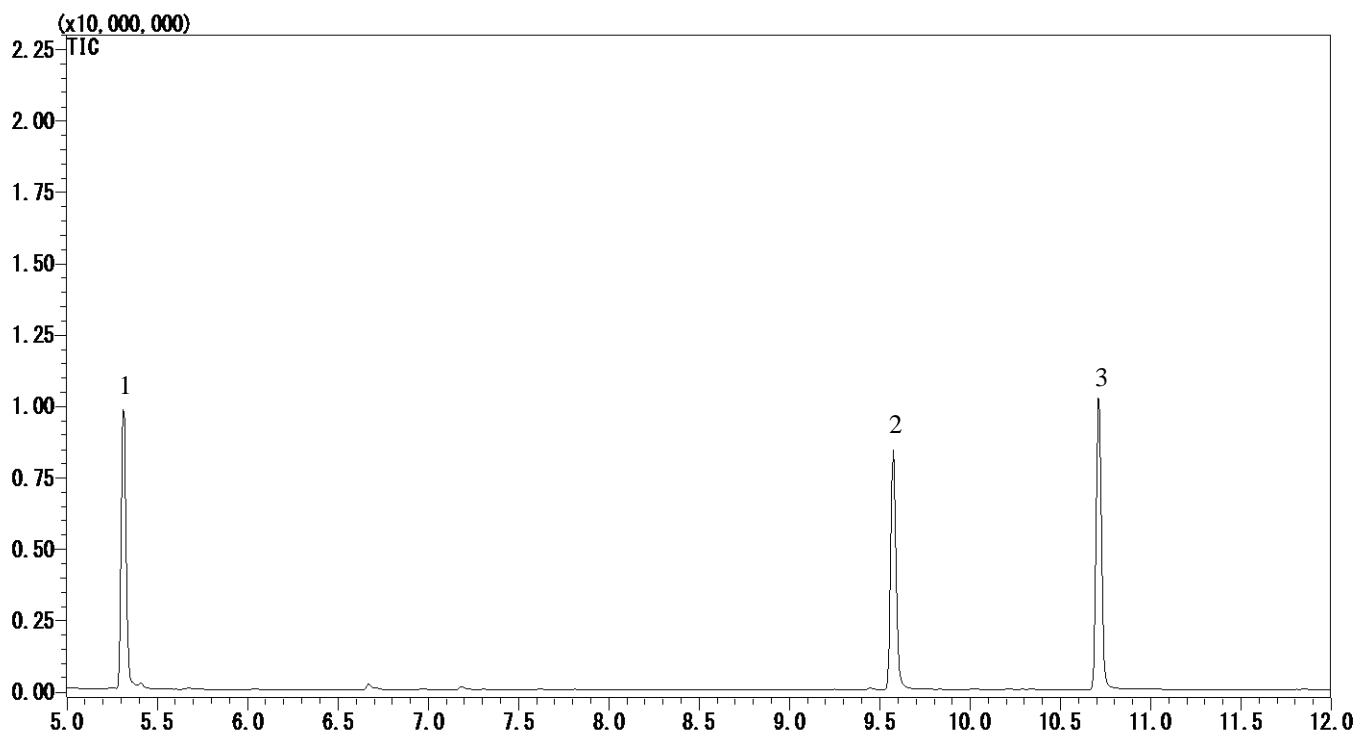


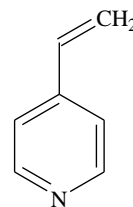
Tobacco



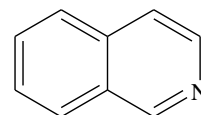
Conditions

System	: GC/MS
Column	: InertCap 5MS/Sil 0.25 mm I.D. x 30 m df = 0.25 μm
Col. Cat. No.	: 1010-15142
Col. Temp.	: 60 °C (1 min hold) - 10 °C/min - 280 °C (7 min hold)
Carrier Gas	: He 36.5 cm/sec
Injection	: Splitless 1 min Vent flow 50 mL/min 250 °C
Detection	: MS Scan (45 - 500m/z) Interface Temp. 280 °C
Sample Size	: 10 μg/mL in IPA 1.0 μL
Analyte	: 1. 4-Vinylpyridine 2. Isoquinoline 3. Nicotine

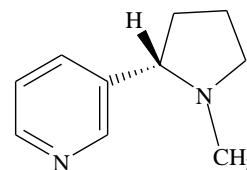
Chemical Structure



1. 4-Vinylpyridine



2. Isoquinoline



3. Nicotine