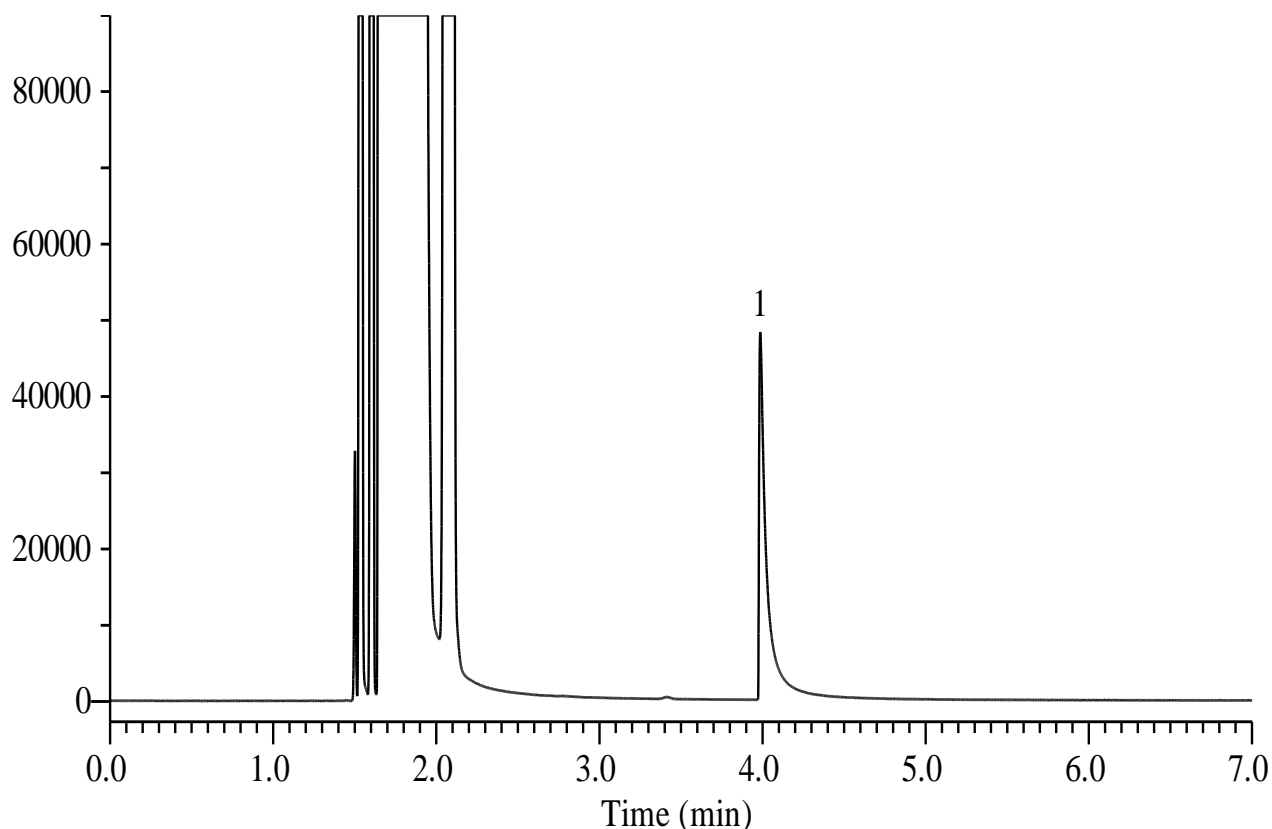


Purity test of Acetohexamide



Conditions

System : GC/FID
Column : InertCap 1
 0.53 mm I.D. x 30 m df = 1.50 μ m
Col. Cat. No. : 1010-11446
Col. Temp. : 90 $^{\circ}$ C
Carrier Gas : He 35 kPa
Injection : Split flow 17 mL/min
 150 $^{\circ}$ C
Detection : FID Range 10^0
 210 $^{\circ}$ C
Sample Size : 40 μ g/mL in Hexane
 2.0 μ L

Analyte : 1. Cyclohexylamine
 *Standard mixture

Chemical Structure

