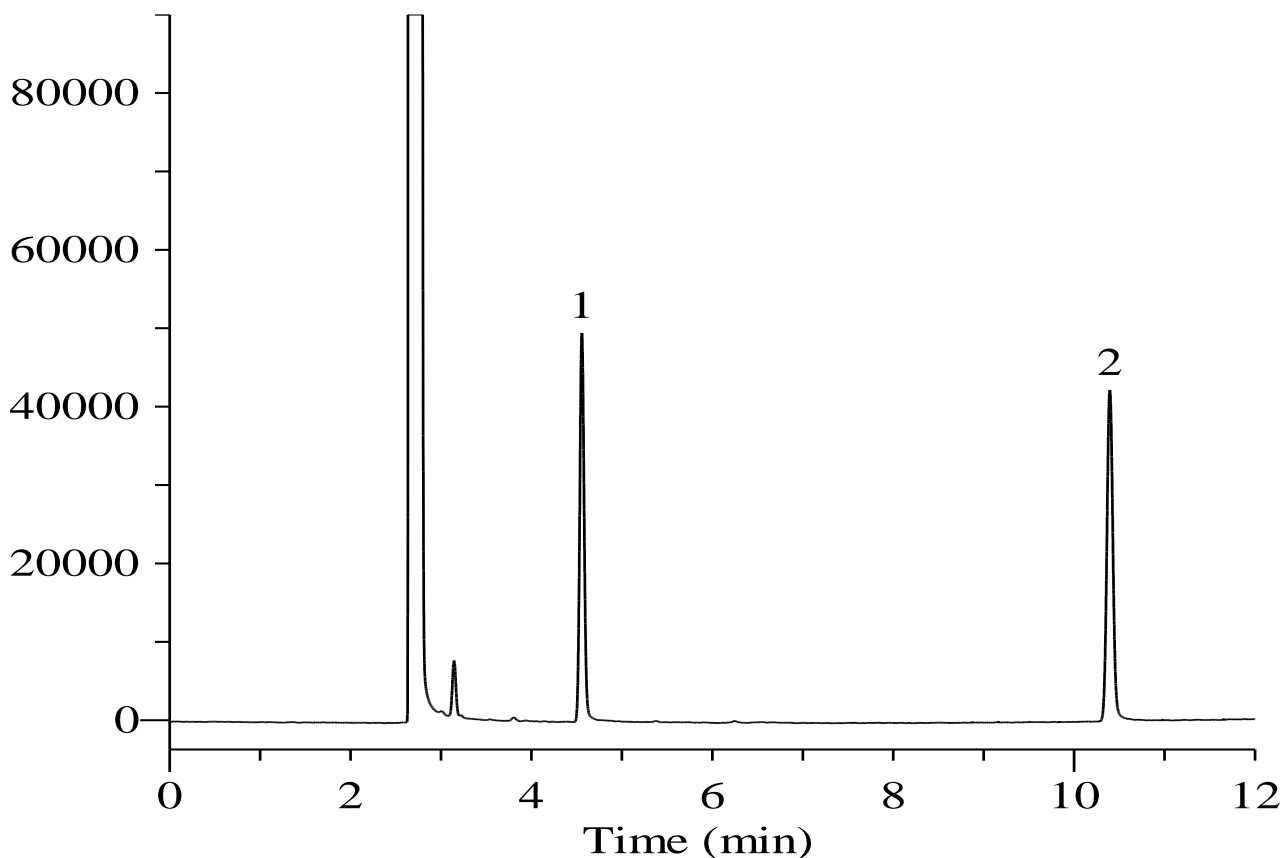


## Ethanolamines



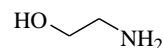
### Conditions

**System** : GC/FID  
**Column** : InertCap for Amines  
 0.32 mm I.D. x 30 m  
**Col. Cat. No.** : 1010-69249  
**Col. Temp.** : 120 °C - 10 °C/min - 240 °C  
**Carrier Gas** : He 60 kPa  
**Injection** : Split flow 50 mL/min  
 240 °C  
**Detection** : FID Range 10<sup>^</sup>0  
 240 °C  
**Sample Size** : 1.0 mg/mL in Methanol  
 1.0 µL

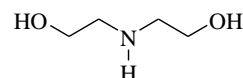
### **Analyte** :

1. Ethanolamine
2. Diethanolamine

### Chemical Structure



1. Ethanolamine



2. Diethanolamine