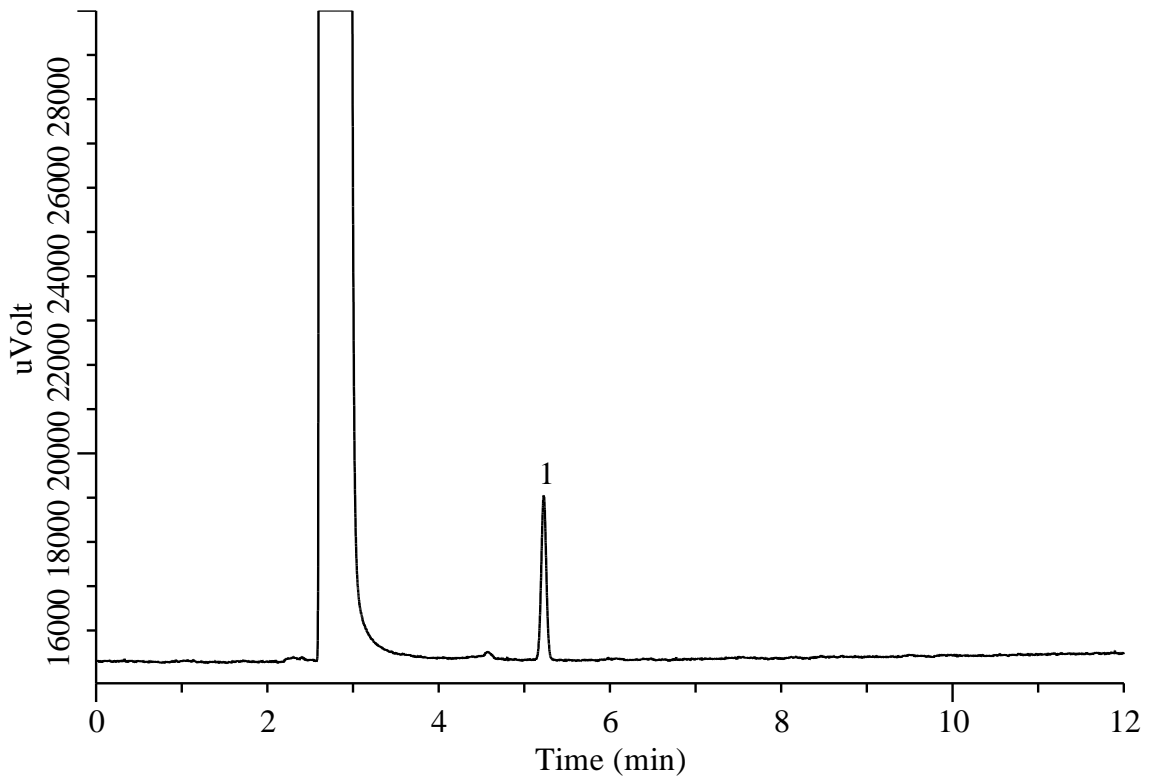


Methyl methacrylate



Conditions

System	: GC/FID
Column	: InertCap 1 0.32 mm I.D. x 30 m df = 5.00 µm
Col.Cat. No.	: 1010-11249
Col. Temp.	: 120 °C (1 min hold) – 5 °C/min – 170 °C (1 min hold)
Carrier Gas	: He 65 kPa
Injection	: Split flow 14 mL/min 200 °C
Detection	: FID Range 10 ⁰ 200 °C
Sample Size	: 15 mg/L in 20 % Ethanol solution 1.0 µL
Analyte	: 1. Methyl methacrylate