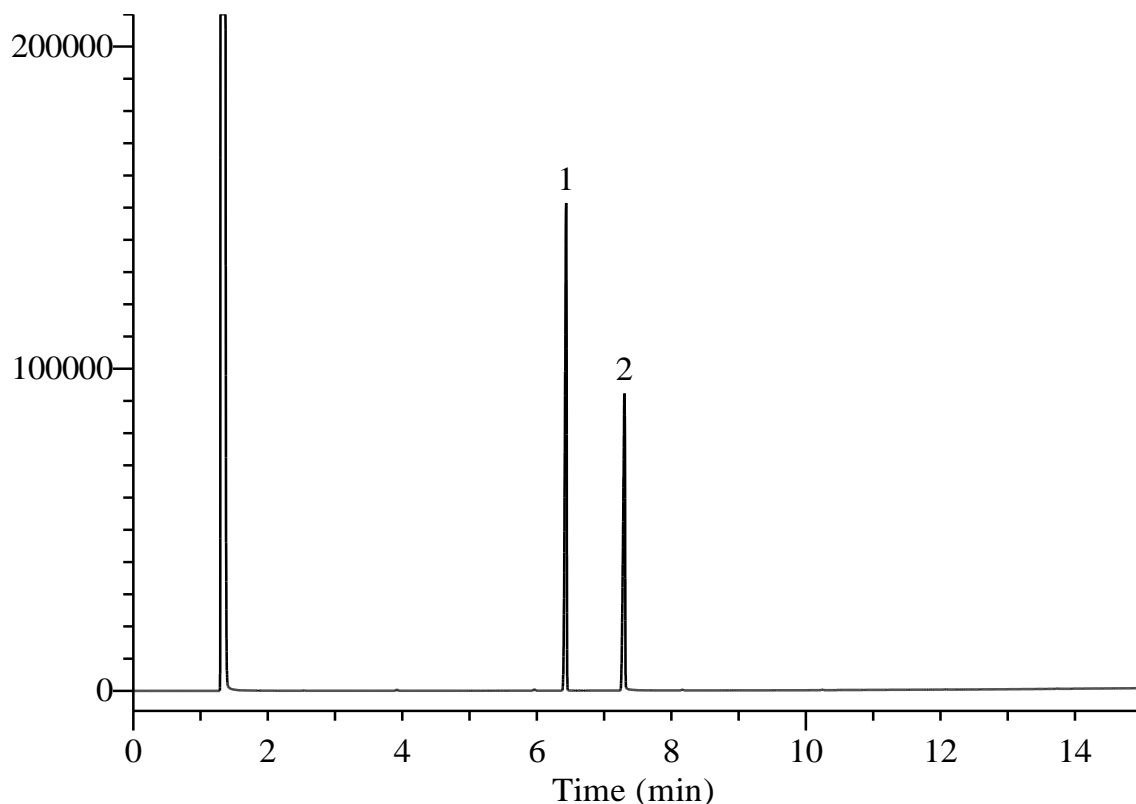


β -Thujaplicin by Japanese Standards of Food Additives



Conditions

System : GC/FID
Column : InertCap 1
 0.25 mm I.D. x 30 m df = 0.25 μ m
Col. Cat. No. : 1010-11142
Col. Temp. : 100 $^{\circ}$ C - 10 $^{\circ}$ C/min - 250 $^{\circ}$ C
Carrier Gas : He 160 kPa
Injection : Split flow 27 mL/min
 250 $^{\circ}$ C
Detection : FID Range 10^1
 270 $^{\circ}$ C
Sample Size : 2000 μ g/mL in Ethanol
 0.5 μ L

Analyte

1. Diphenyl ether
 2. β -Thujaplicin