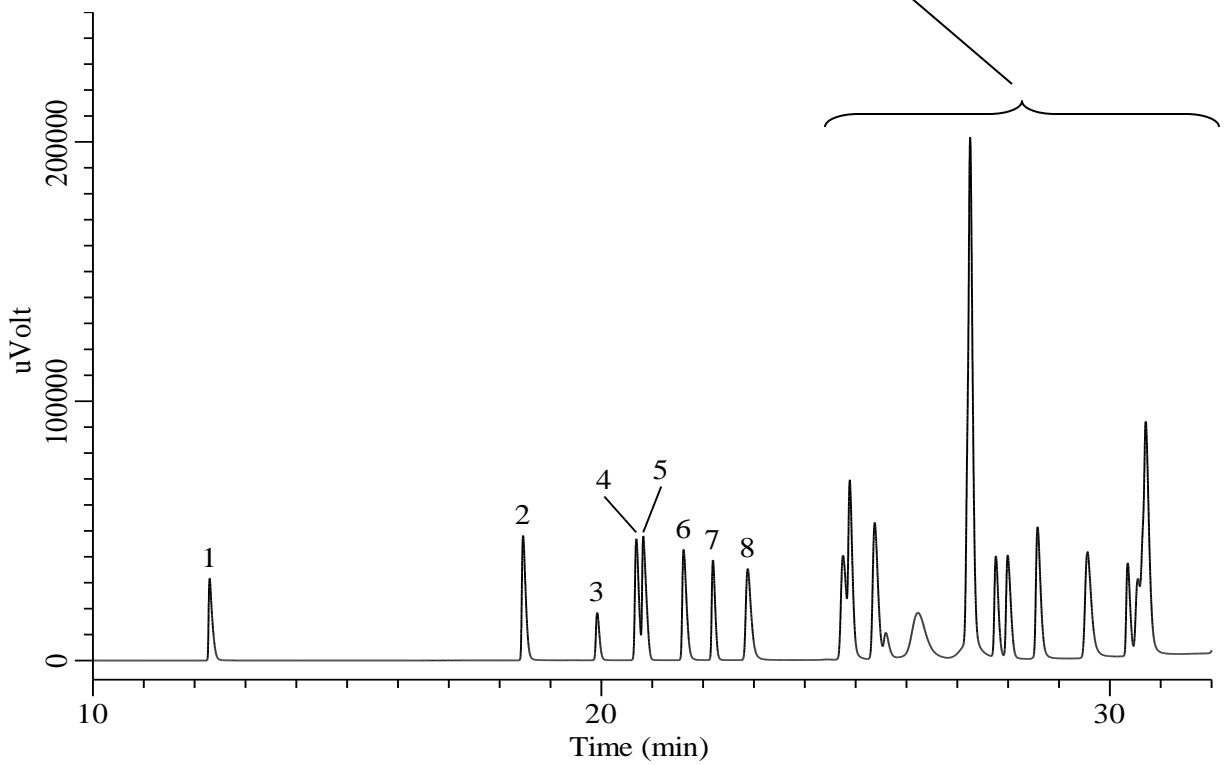
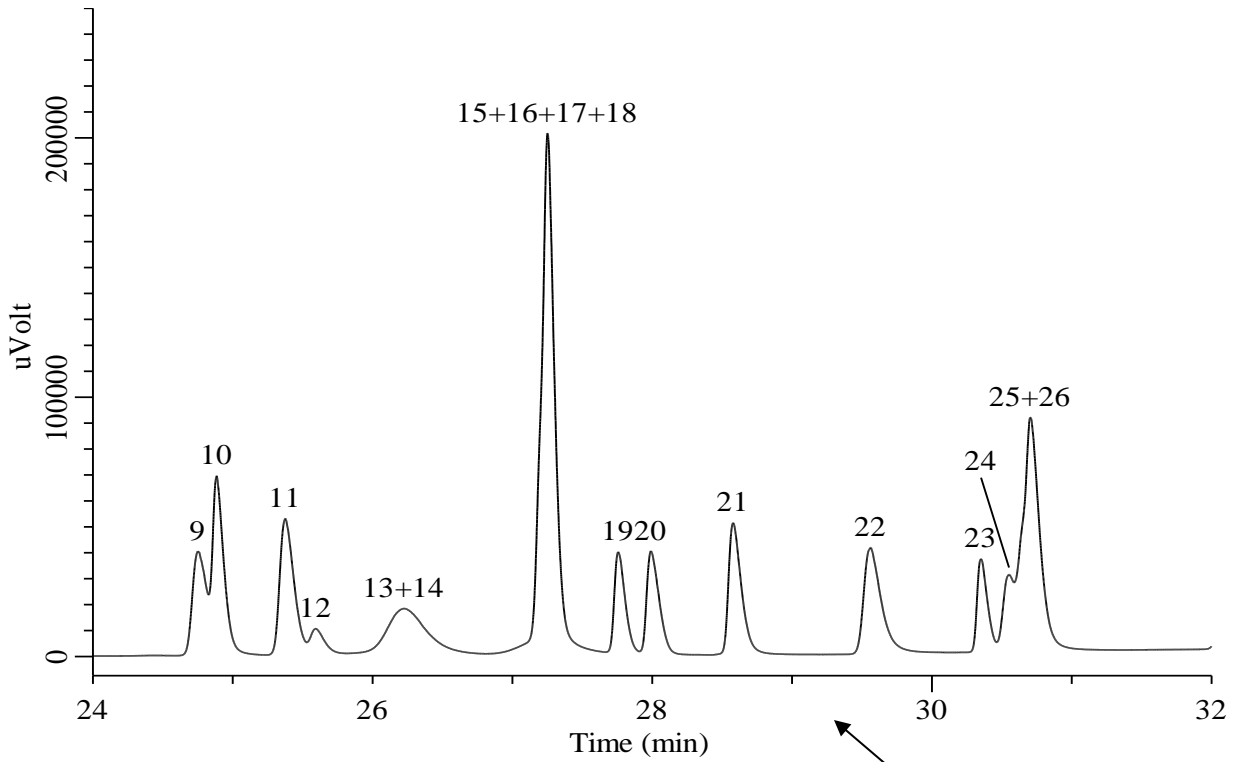


# Organic Solvents



## Organic Solvents

### Conditions

<b>System</b>	: GC/FID
<b>Column</b>	: TC-BOND U 0.53 mm I.D. x 30 m df = 20 µm
<b>Col. Cat. No.</b>	: 1010-40443
<b>Col. Temp.</b>	: 40 °C - 5 °C/min - 190 °C
<b>Carrier Gas</b>	: He 30 kPa
<b>Injection</b>	: Split flow 150 mL/min 190 °C
<b>Detection</b>	: FID Range 10 <sup>1</sup> 190 °C
<b>Sample Size</b>	: Mixed evenly 0.2 µL

### Analyte

- |                                  |   |
|----------------------------------|---|
| 1. Methanol                      | 14. Carbon tetrachloride                  |
| 2. Ethanol                       | 15. Methyl ethyl ketone(MEK)              |
| 3. Dichloromethane               | 16. Ethyl acetate                         |
| 4. Ethyl ether                   | 17. 1,1,1-Trichloroethane                 |
| 5. Acetonitrile                  | 18. Benzene                               |
| 6. Acetone                       | 19. Trichloroethylene                     |
| 7. Methyl acetate                | 20. 1,2-Dichloroethane                    |
| 8. 2-Propanol(Isopropyl alcohol) | 21. 2-Butanol                             |
| 9. Tetrahydrofuran               | 22. 2-Methyl-1-propanol(Isobutyl alcohol) |
| 10. 1-Propanol                   | 23. Methyl cellosolve                     |
| 11. <i>n</i> -Hexane             | 24. 1,4-Dioxane                           |
| 12. Chloroform                   | 25. 1-Butanol                             |
| 13. <i>tert</i> -Butanol         | 26. Isopropyl acetate                     |