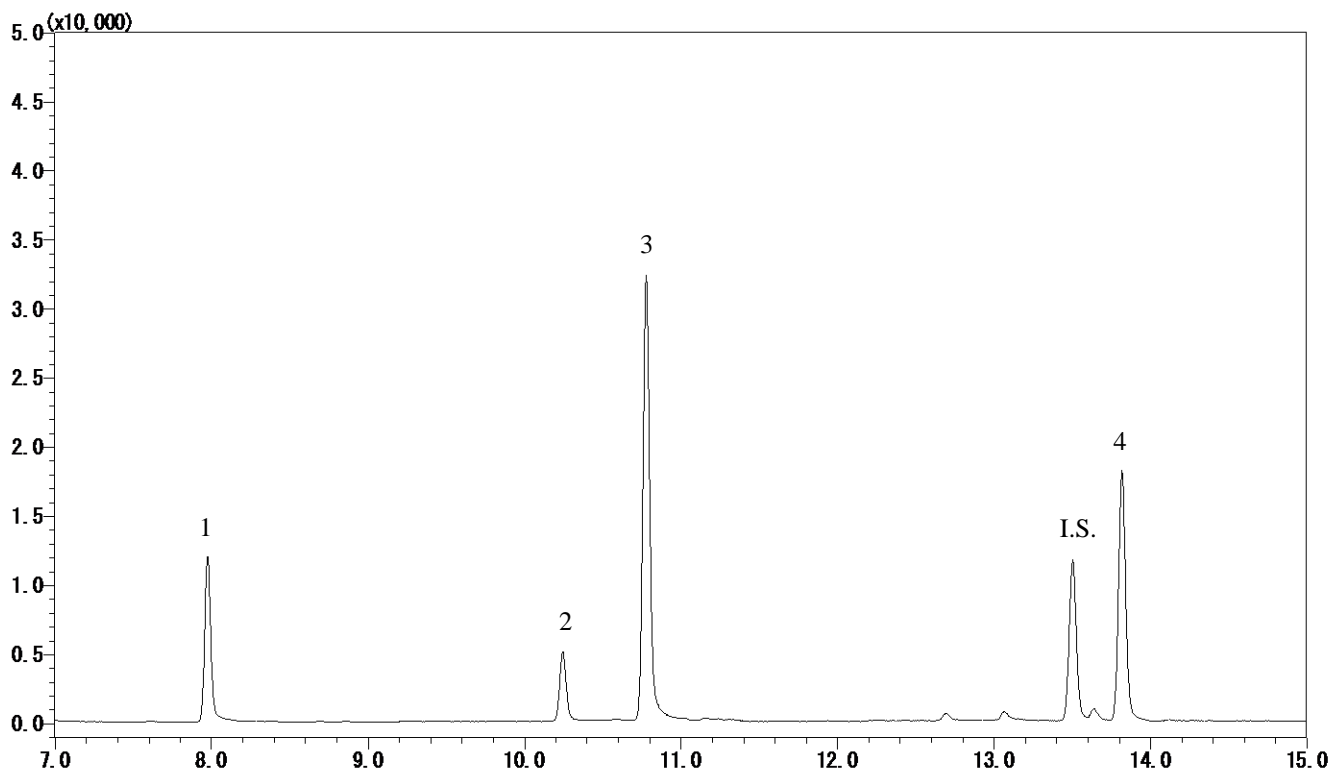


Haloacetic acids



Conditions

System : GC-MS
Column : InertCap 1MS
 0.25 mm I.D. x 30 m df = 1.0 μ m
Col. Cat. No. : 1010-12145
Col. Temp. : 40 °C (1 min hold) - 5 °C/min - 120 °C - 20 °C/min - 240 °C (2 min hold)
Carrier Gas : He 36.0 cm/sec
Injection : Pulsed Splitless (150kPa until 1.5 min) 1min
 250 °C
Detection : MS SIM
 Interface Temp. 280 °C
Sample Size : Analyte in MTBE
 1 μ L

Analyte : 1. Chloroacetic acid (0.25 μ g/mL)
 2. Bromoacetic acid (0.25 μ g/mL)
 3. Dichloroacetic acid (0.25 μ g/mL)
 4. Trichloroacetic acid (0.25 μ g/mL)
 I.S. 1,2,3-Trichloropropane (0.5 μ g/mL)
 (Methylester Deriv. by Diazomethane)