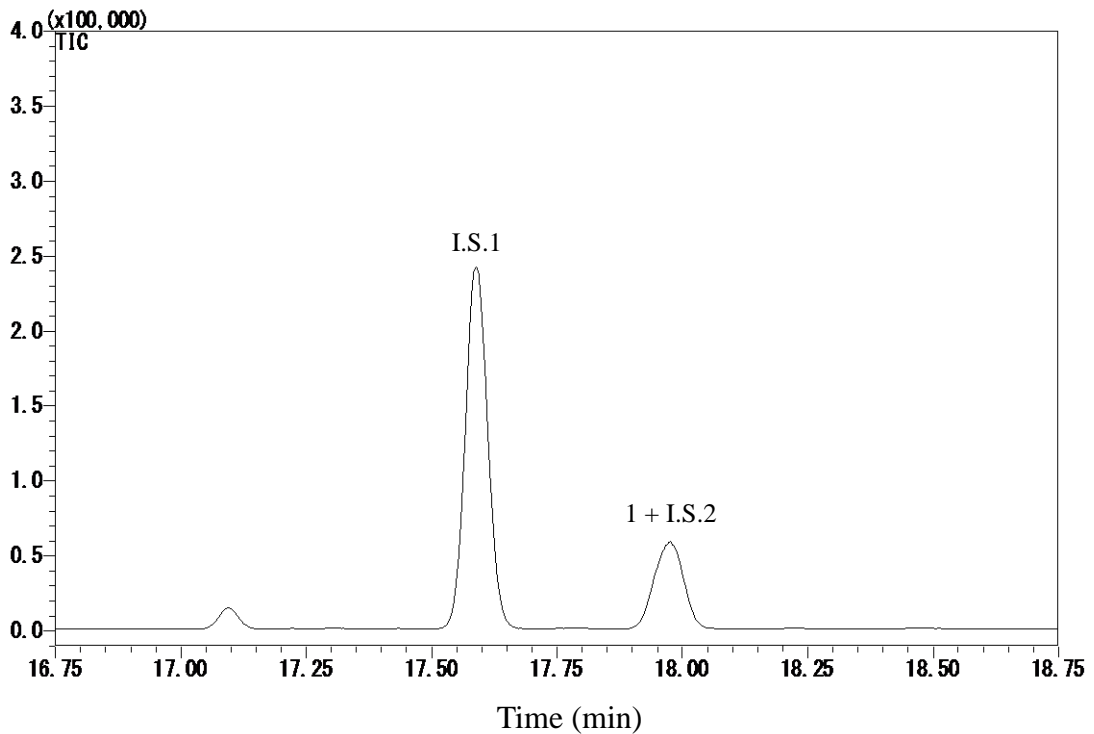


Aniline



Conditions

- System** : GC-MS
- Column** : InertCap Pure-WAX
0.25 mm I.D. x 30 m df = 0.25 µm
- Col. Cat. No.** : 1010-68142
- Col. Temp.** : 60 °C (5 min hold) - 10 °C/min - 200 °C (5 min hold)
- Carrier Gas** : He 36.5 cm/s
- Injection** : Splitless 1min
250 °C
- Detection** : MS SIM
Interface Temp. 250 °C
- Sample Size** : Analyte in Methylacetate
1 µL
- Analyte** : 1. Aniline (0.2 µg/mL)
I.S.1. Naphthalene-*d*8 (0.5 µg/mL)
I.S.2. Aniline-*d*5 (0.2 µg/mL)

Aniline

