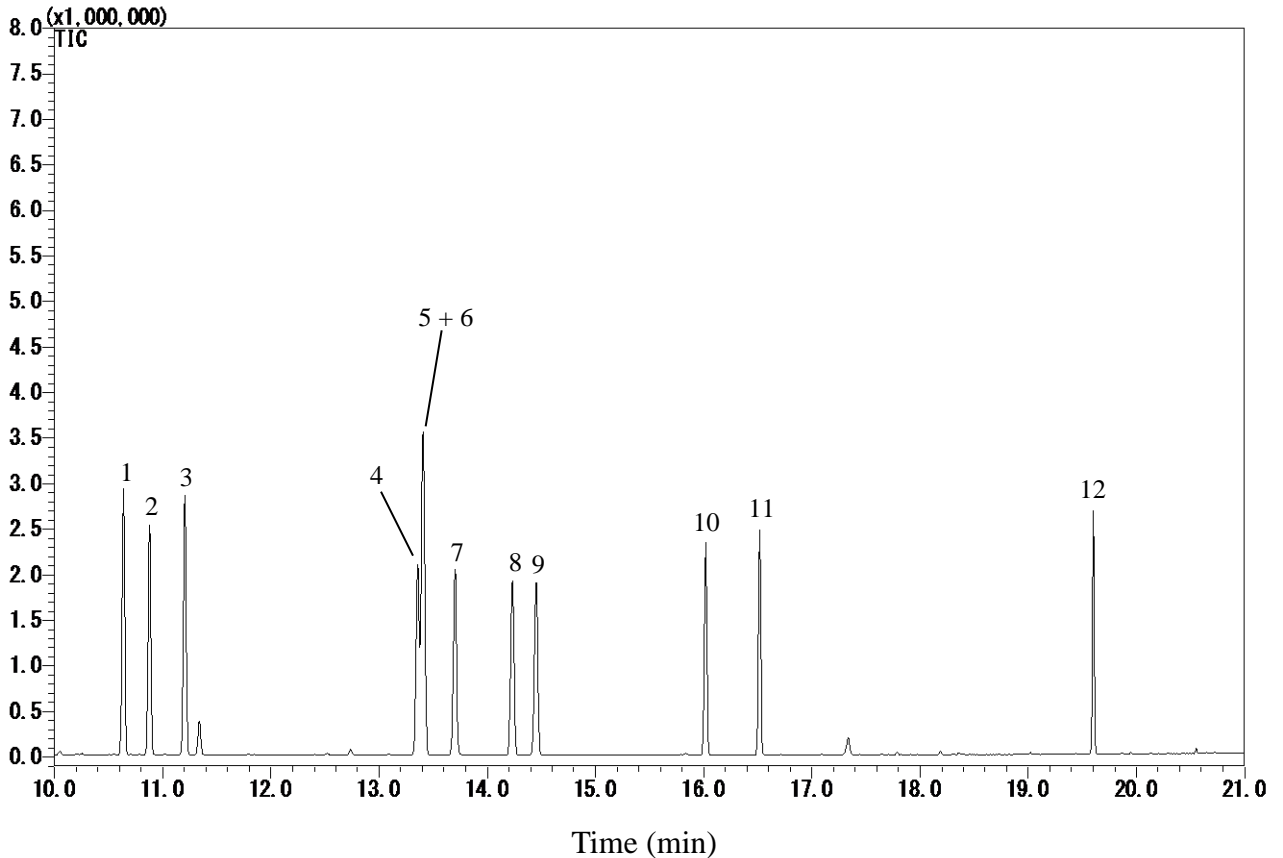


Chlorophenols



Conditions

System	: GC-MS	Analyte	:
Column	: InertCap 5MS/Sil 0.25 mm I.D. x 30 m df = 0.25 µm	1.	2-Chlorophenol
Col. Cat. No.	: 1010-18642	2.	3-Chlorophenol
Col. Temp.	: 40 °C (1 min hold) - 10 °C/min - 120 °C - 5 °C/min - 150 °C - 20 °C/min - 280 °C (5 min hold)	3.	4-Chlorophenol
Carrier Gas	: He 36.1 cm/s	4.	2,5-Dichlorophenol
Injection	: Splitless 1min 250 °C	5.	2,6-Dichlorophenol
Detection	: MS Scan (m/z 35 - 450) Interface Temp. 280 °C	6.	3,5-Dichlorophenol
Sample Size	: 10 µg/mL in Acetone 1 µL	7.	2,4-Dichlorophenol
		8.	2,3-Dichlorophenol
		9.	3,4-Dichlorophenol
		10.	2,4,6-Trichlorophenol
		11.	2,3,6-Trichlorophenol
		12.	Pentachlorophenol (TMS Deriv. by BSTFA)