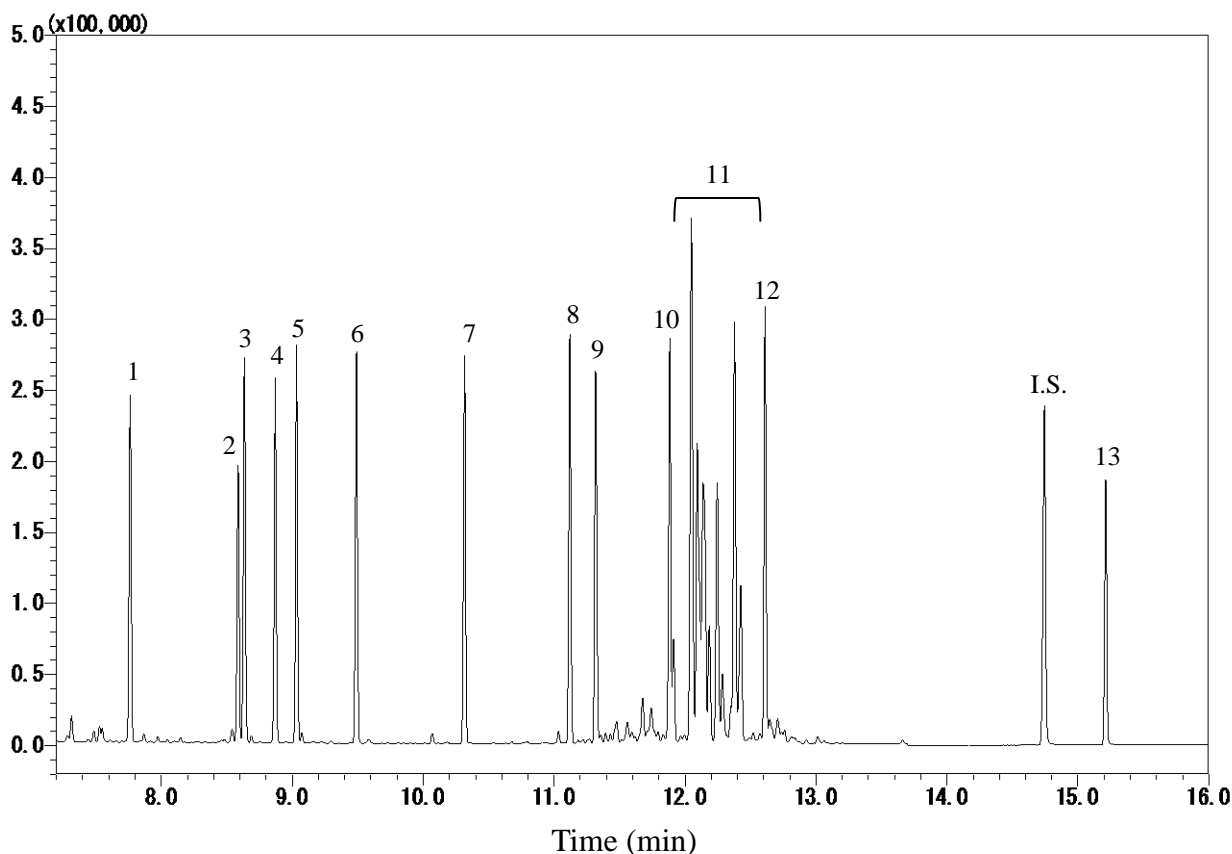


Alkylphenols



Conditions

System : GC-MS
Column : InertCap 5MS
 0.25 mm I.D. x 30 m df = 0.25 µm
Col. Cat. No. : 1010-18642
Col. Temp. : 50 °C (1 min hold) - 15 °C/min
 - 280 °C (15 min hold)
Carrier Gas : He 36.3 cm/s
Injection : Splitless 1min
 250 °C
Detection : MS SIM
 Interface Temp. 280 °C
Sample Size : 1 µg/mL in Dichloromethane
 1 µL

Analyte :

1. 4-Ethylphenol
2. 2-*t*-Butylphenol
3. 3-*t*-Butylphenol
4. 4-*t*-Butylphenol
5. 4-*sec*-Butylphenol
6. 4-*n*-Butylphenol
7. 4-*n*-Pentylphenol
8. 4-*n*-Hexylphenol
9. 4-*t*-Octylphenol
10. 4-*n*-Heptylphenol
11. Nonylphenol (10 µg/mL)
12. 4-*n*-Octylphenol
13. Bisphenol A

I.S. Pyrene-*d*10 (2 µg/mL)
 (TMS Deriv. by BSTFA)