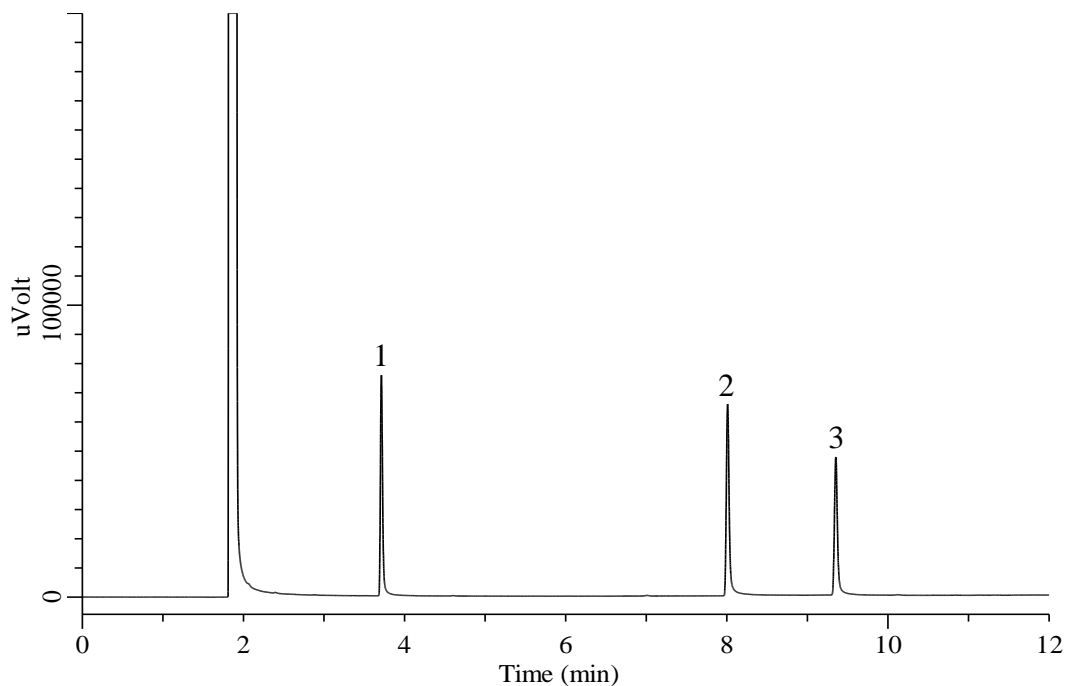


Glycerin, Concentrated glycerin

(Under the Condition of the Japanese Pharmacopoeia 16)



Conditions

System : GC-FID
Column : InertCap 1701
 0.32 mm I.D. x 30 m df = 1.0 μ m
Col. Cat. No. : 1010-61245
Col. Temp. : 100 $^{\circ}$ C — 7.5 $^{\circ}$ C/min — 220 $^{\circ}$ C
Carrier Gas : He 80 kPa
Injection : Split 1:20
 220 $^{\circ}$ C
Detection : FID Range 10^0
 250 $^{\circ}$ C
Sample Size : 1 μ L
Sample : Standard
 500 mg/L in Methanol

Analyte

1. Ethylene glycol
 2. Diethylene glycol
 3. Glycerin

Resolution (1, 2) : 78.8 (\geq 40)
 Resolution (2, 3) : 21.1 (\geq 10)