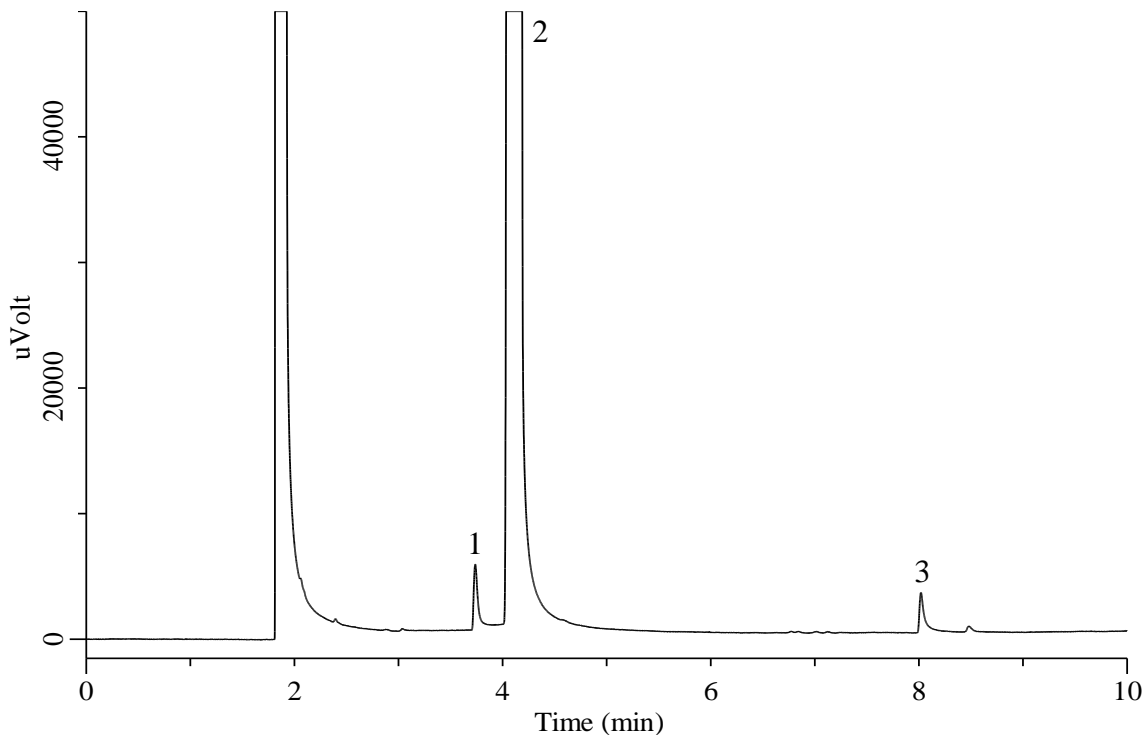


# Propylene glycol

(Under the Condition of the Japanese Pharmacopoeia 16)



## Conditions

**System** : GC-FID  
**Column** : InertCap 1701  
 0.32 mm I.D. x 30 m df = 1.0  $\mu$ m  
**Col. Cat. No.** : 1010-61245  
**Col. Temp.** : 100 °C — 7.5 °C/min — 220°C  
**Carrier Gas** : He 80 kPa  
**Injection** : Split 1:20  
 220 °C  
**Detection** : FID Range 10<sup>0</sup>  
 250 °C  
**Sample Size** : 1  $\mu$ L  
**Sample** : Standard  
 Analyte in Methanol

## Analyte

1. Ethylene glycol	50 mg/L
2. Propylene glycol	50000 mg/L
3. Diethylene glycol	50 mg/L
RSD of the peak area (1)(%)(n=6)	: 3.9 ( $\leq$ 10)
RSD of the peak area (3)(%)(n=6)	: 3.0 ( $\leq$ 10)