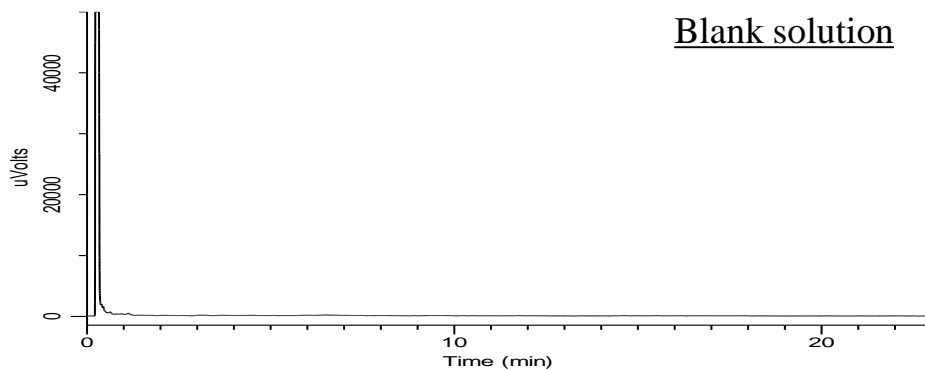
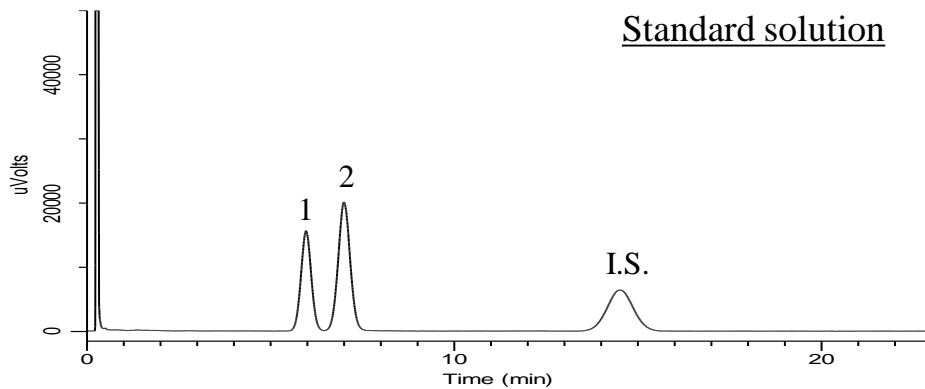


Analysis of Saccharin

(Under the Condition of the PDG (Pharmacopeial Discussion Group) Stage 6 Drafts)



Conditions

System : GC-FID
Column : InertCap 17
 0.53 mm I.D. x 10 m df = 2.0 μ m
Col. Cat. No. : 1010-65417
Col. Temp. : 180 $^{\circ}$ C
Carrier Gas : N₂ 10 mL/min Constant Flow
Injection : Split 1:2
 250 $^{\circ}$ C
Injection Vol. : 1 μ L
Detection : FID Auto Range
 250 $^{\circ}$ C
Sample : Standard in Dichloromethane

Analyte

1. *o*-Toluenesulfonamide
 2. *p*-Toluenesulfonamide
 I.S. Caffeine

Resolution (1, 2) : 1.86 (\geq 1.5)