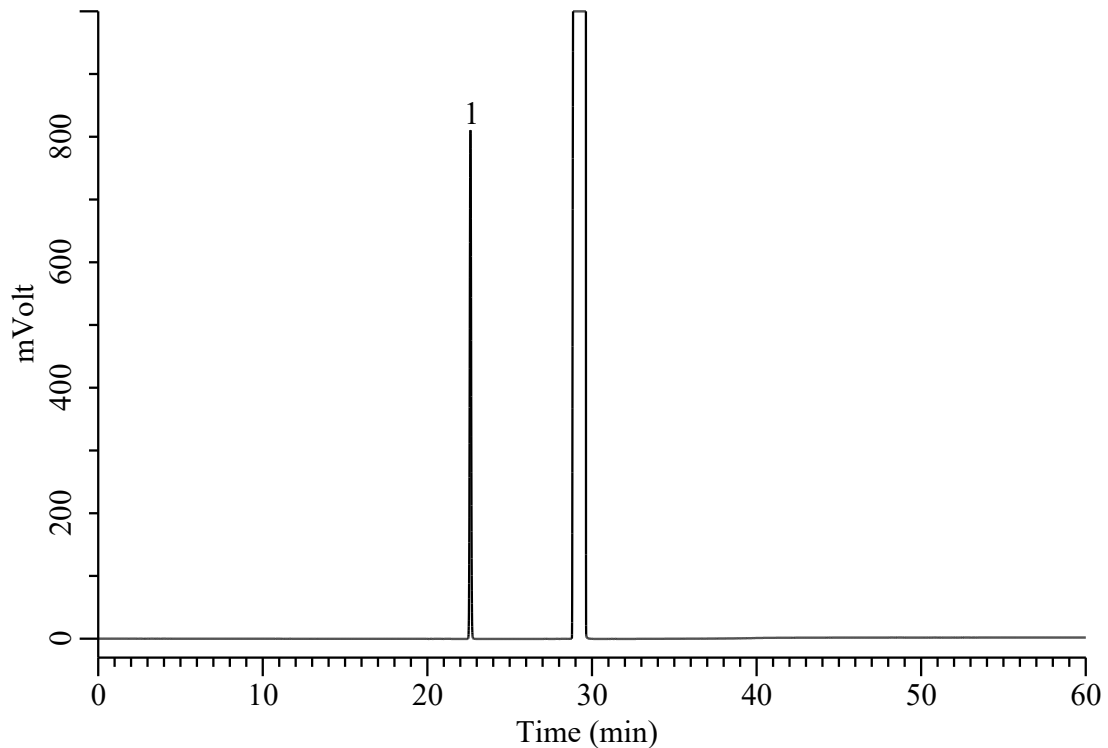


Analysis of Residual solvents in pharmaceuticals (Class 2E)



Conditions

System : GC-4000 Plus /FID
Column : InertCap 624MS (GL Sciences Inc.)
 0.32 mm I.D. x 30 m df = 1.8 µm
Col. Cat. No. : 1010-64747
Col. Temp. : 40 °C (20 min) - 10 °C/min - 240 °C (20 min)
Carrier Gas : He 2.2 mL/min , Constant Flow
Injection : Split 1 : 20
 140 °C
Detection : FID Auto Range
 250 °C
Sample : Japanese Pharmacopoeia Residual Solvent
 Class 2E Standard
Sample Size : 1 µL
 Analyte in Dimethyl sulfoxide

Analyte

1. Cyclopentyl methyl ether 0.7 % (w/w)