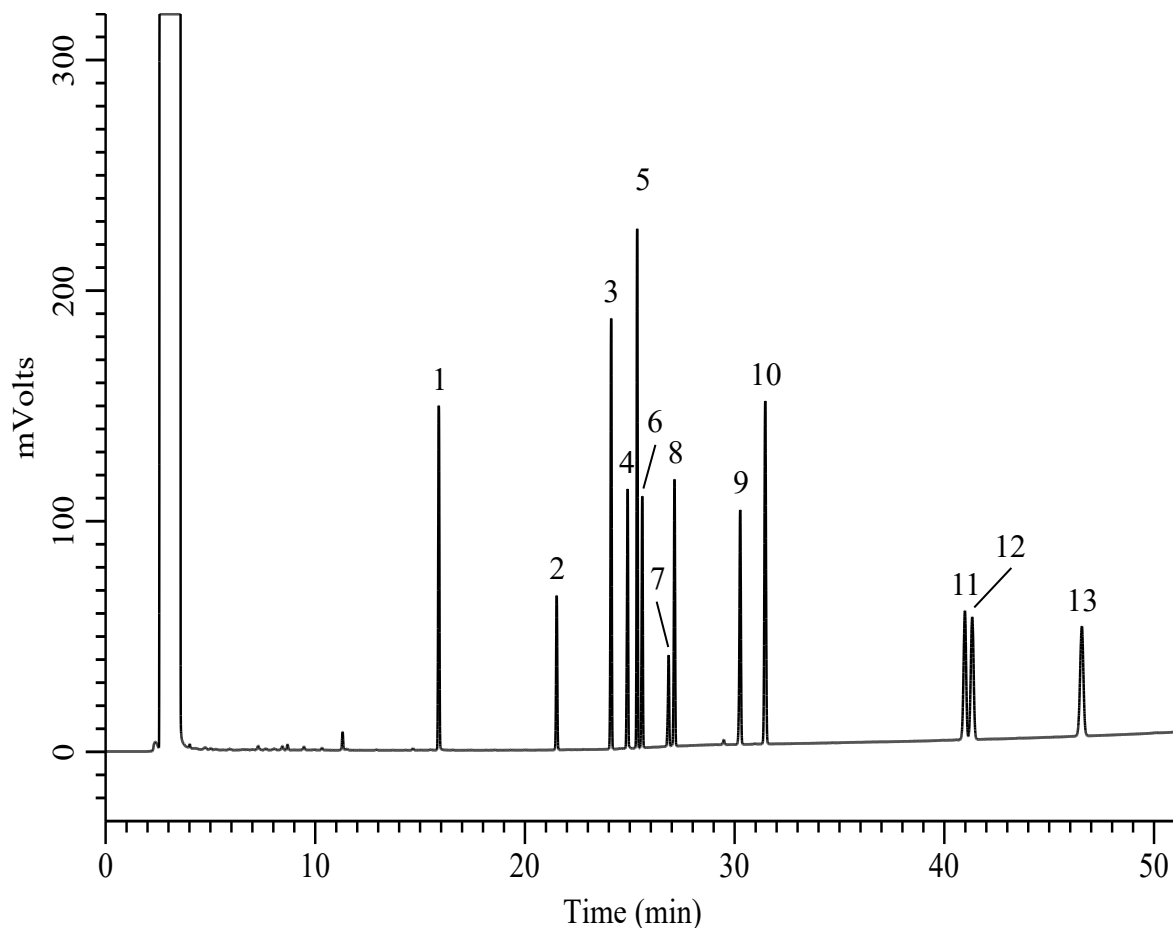


Semi Volatile Organic Compounds



Conditions

System : GC-4000 Plus/FID
Column : InertCap 1 (GL Sciences Inc.)
 0.32 mm I.D. x 60 m df = 1.0 μ m
Col. Cat. No. : 1010-11265
Col. Temp. : 40 °C (5 min) – 10 °C/min – 250 °C (0 min)
 – 1 °C/min – 280 °C (0 min)
Carrier Gas : N₂ 200 kPa (5.0 mL/min) , Constant Press.
Injection : Splitless 0.5 min
 300 °C
Detection : FID Auto Range
 300 °C
Sample Size : 50 μ g/mL in Acetone
 1.0 μ L

Analyte:

1. 2-Ethyl-1-hexanol
2. Dodecamethylcyclohexasiloxane (D6)
3. Butylated hydroxytoluene (BHT)
4. Di-ethyl phthalate (DEP)
5. *n*-Hexadecane
6. Tri-*n*-butyl phosphate (TBP)
7. Tris(2-chloroethyl) phosphate (TCEP)
8. Di-*n*-butyl adipate (DBA)
9. Di-*n*-butyl phthalate (DBP)
10. *n*-Eicosane
11. Triphenyl phosphate (TPP)
12. Di(2-ethylhexyl) adipate (DOA)
13. Di(2-ethylhexyl) phthalate (DOP)