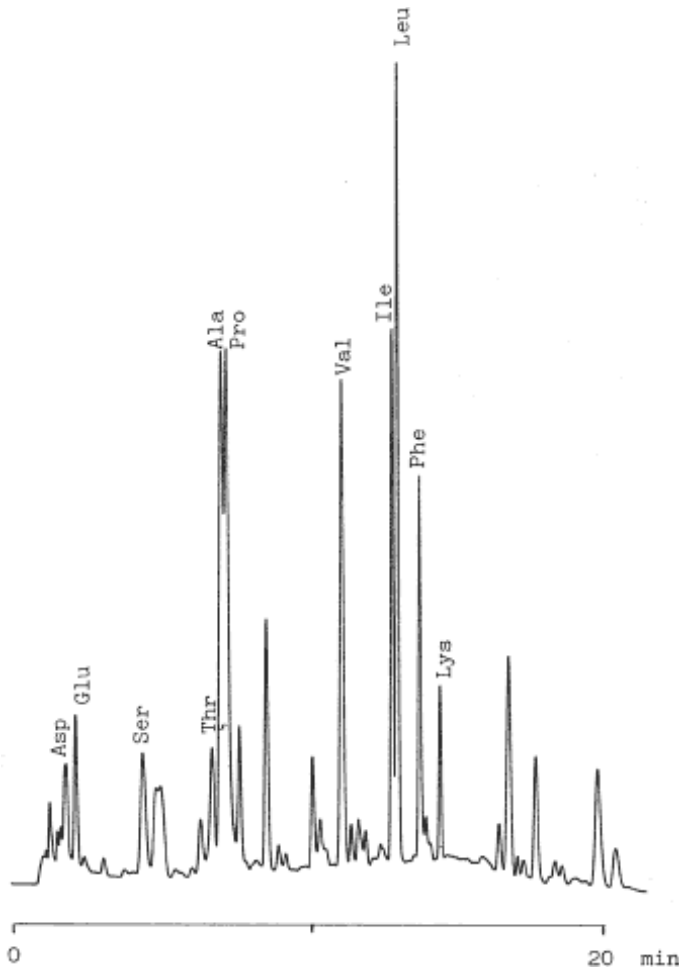


PTC-Amino acids in Soy-sauce



Column :Inertsil C8
 5µm
 10 × 4.0 mm I.D. (Guard) + 100 × 4.6 mm I.D.

Column Cat. No. :5020-01201

Eluent :A: CH₃CN/0.1 M CH₃COONH₄ = 5/95
 B: CH₃CN/0.1 M CH₃COONH₄ = 45/55
 A/B = 100/0 - 7 min - 75/25 - 7 min - 0/100

Flow rate :1.0 mL/min.

Col. Temp. :40 °C

Detection :UV 254 nm

Injection Vol. :

Sample :PTC-amino acids

Solutes

- :1. Asparatic acid (Asp)
2. Glutamic acid (Glu)
3. Serine (Ser)
4. Threonine (Thr)
5. Alanine (Ala)
6. Proline (Pro)
7. Valine (Val)
8. Isoleucine (Ile)
9. Leucine (Leu)
10. Phenylalanine (Phe)
11. Lysine (Lys)