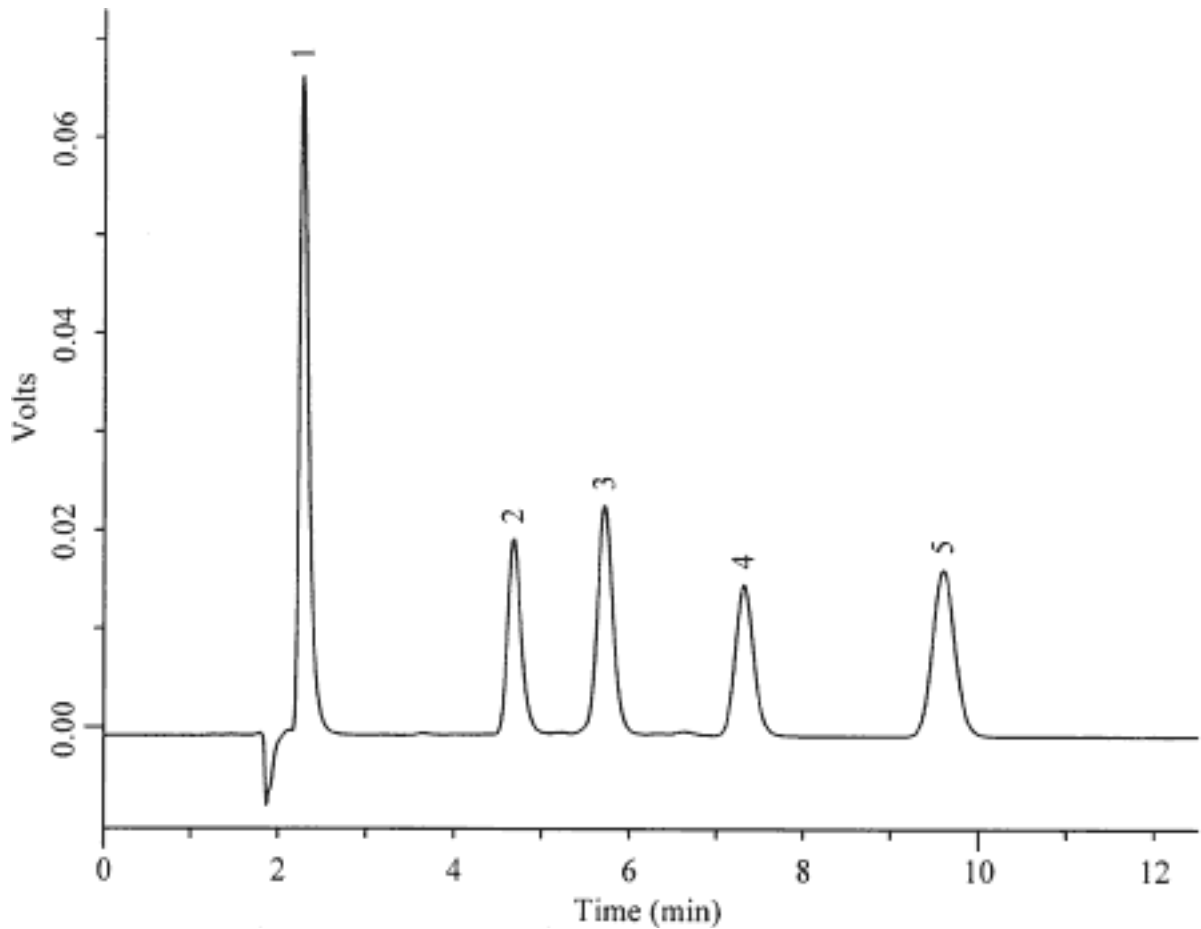


Vitamins



Column : Inertsil C8-3
150 × 4.6 mm I.D.

Column Cat. No. :

Eluent : CH₃OH/H₂O = 95/5

Flow rate : 1.0 mL/min.

Col. Temp. : 40°C

Detection : UV 280 nm

Injection Vol. : 5 µL

Sample : Fat-soluble Vitamins

Solutes : 1. Vitamin K3 (0.18 mg/mL)

2. Vitamin D3 (0.03 mg/mL)

3. Vitamin E (0.36 mg/mL)

4. Vitamin E acetate (0.36 mg/mL)

5. Vitamin K1 (0.09 mg/mL)