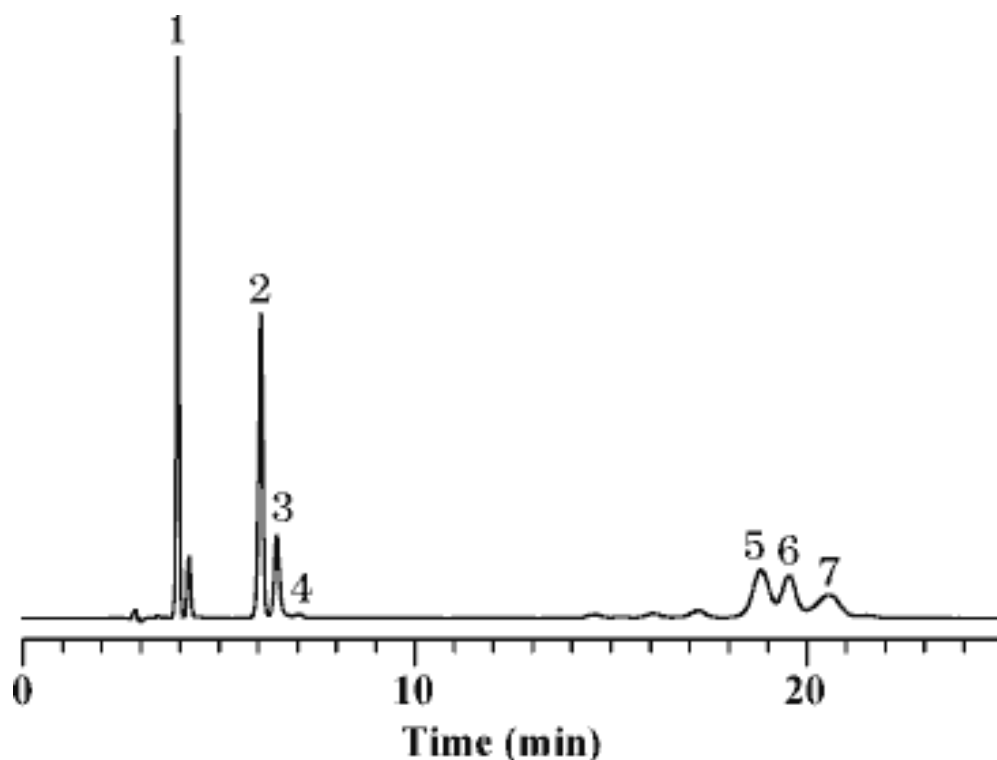


Water-soluble vitamins



Column : Inertsil NH2
5 μ m
250 \times 4.6 mm I.D.

Solutes : 1. Nicotinamide

Column Cat. No. :

2. Nicotinic acid

Eluent : 50 mM KH₂PO₄ (pH 2.0; H₃PO₄)/CH₃CN = 30/70

3. Pyridoxine

Flow rate : 1.0 mL/min.

4. Folic acid

Col. Temp. : 40°C

5. Cyanocobalamin

Detection : UV 220 nm

6. Riboflavine

Injection Vol. : 1 μ L

7. Thiamine

Sample : Water-soluble Vitamins