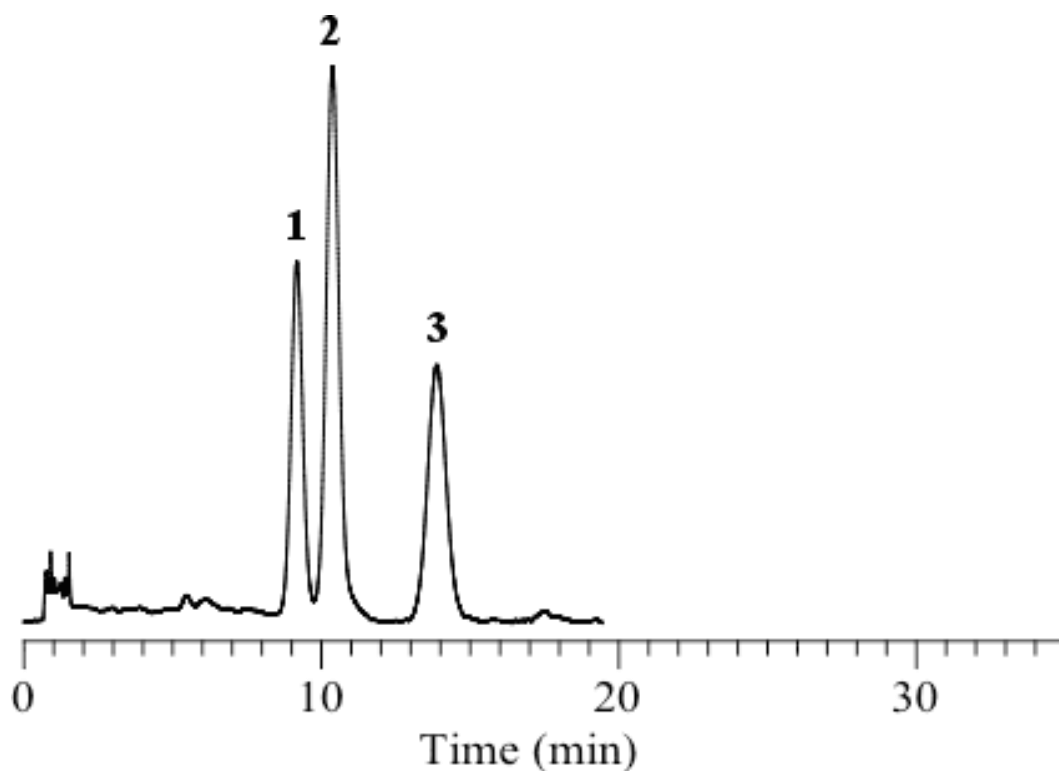


Analysis of Carotenoids



Column	: Inertsil ODS-P 5 μ m 150 x 4.6 mm I.D.	Solutes	: 1. α -Carotene 2. β -Carotene 3. Lycopene
Column Cat. No.	: 5020-02001		
Eluent	: A) CH ₃ OH B) THF A/B = 95/5, v/v		
Flow rate	: 1.0 mL/min.		
Col. Temp.	: 30°C		
Detection	: VIS 450 nm		
Injection Vol.	:		
Sample	:		