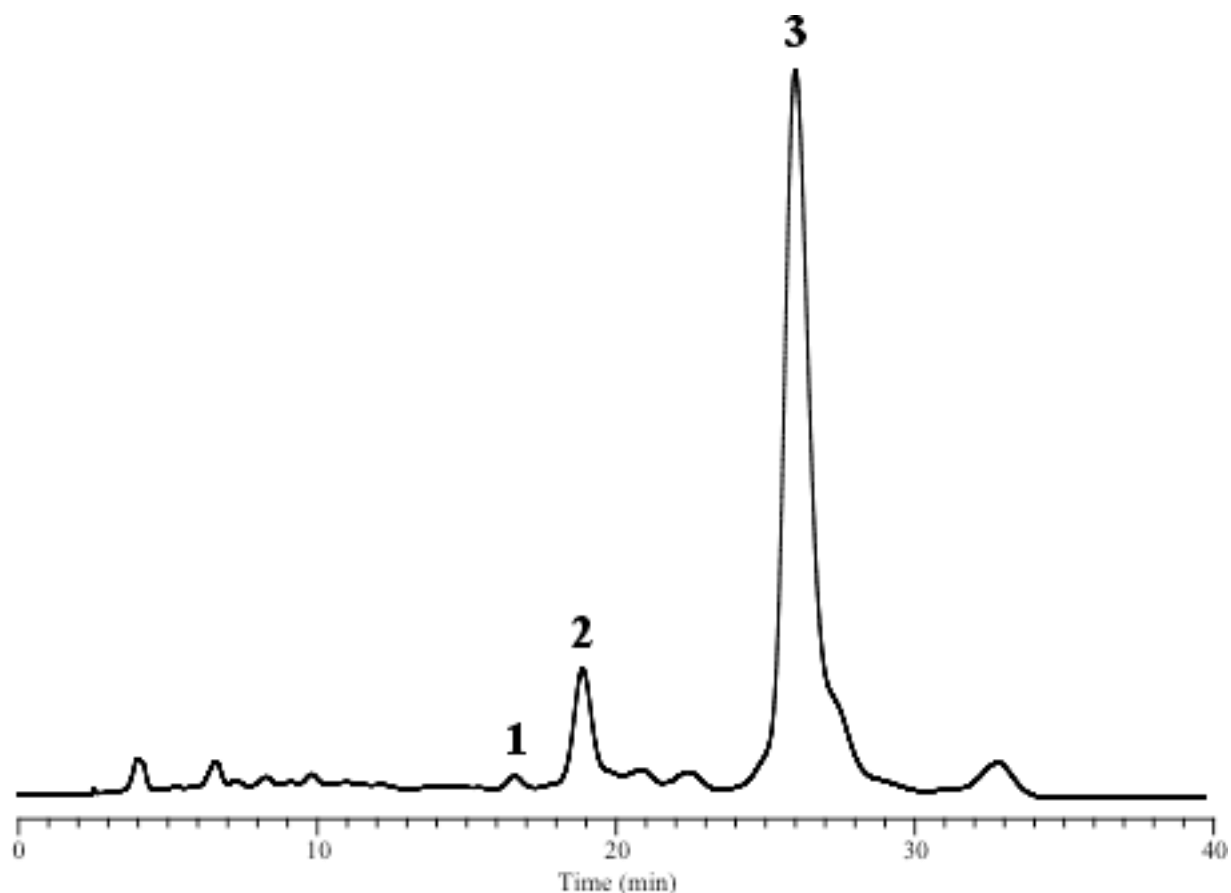


Analysis of Vegetable Juice



Column : Inertsil ODS-P
 5 μm
 250 x 4.6 mm I.D.

Column Cat. No.: 5020-02002

Eluent : A) CH₃OH
 B) THF
 A/B = 95/5, v/v

Flow rate : 1.0 mL/min.

Col. Temp. : 30°C

Detection : VIS 450 nm

Injection Vol. :

Sample : Carotenoids

Solutes : 1. α -Carotene
 2. β -Carotene
 3. Lycopene