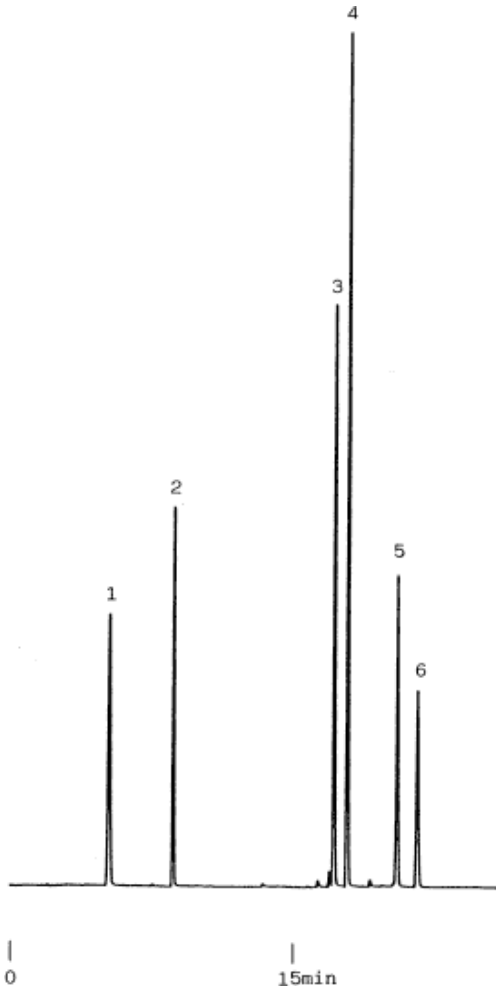


## 6. Synthetic food dyes



Column	:Inertsil ODS-2 5µm 150 × 4.6 mm I.D.	Solutes	: 1. R-2 2. R-102 3. R-3 4. R-106 5. R-104 6. R-105 each 100 ng
Column Cat. No.	:5020-01101		
Eluent	:A: CH <sub>3</sub> OH/10 mM (NH <sub>4</sub> ) <sub>2</sub> HPO <sub>4</sub> = 10/90 B: CH <sub>3</sub> OH/10 mM (NH <sub>4</sub> ) <sub>2</sub> HPO <sub>4</sub> = 70/30 A/B = 100/0 - 15 min - 0/100		
Flow rate	:1.0 mL/min.		
Col. Temp.	:50°C		
Detection	:VIS 530 nm		
Injection Vol.	:		
Sample	:Synthetic Food Dyes		