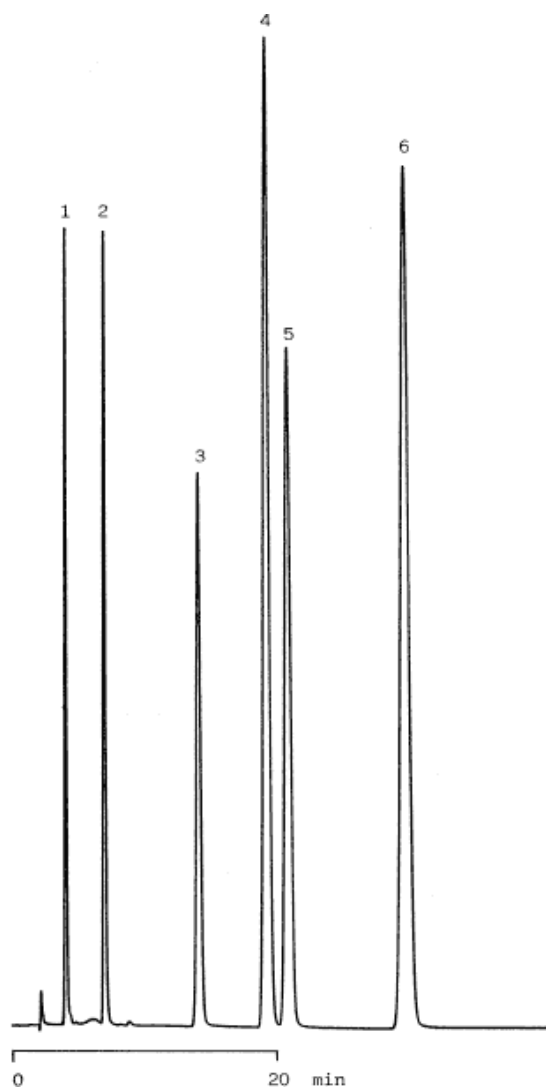


### 13. Synthetic antibacterials



Column : Inertsil C4  
 5µm  
 150 × 4.6 mm I.D.

Column Cat. No. : 5020-01401

Eluent : CH<sub>3</sub>CN/0.1 % H<sub>3</sub>PO<sub>4</sub> = 15/85

Flow rate : 1.0 mL/min.

Col. Temp. : 40°C

Detection : UV 284 nm

Injection Vol. :

Sample : Synthetic Antibacterials

Solutes : 1. Sulfamerazine (40 µg/mL)  
 2. Furazolidone (80 µg/mL)  
 3. Oxolinic acid (70 µg/mL)  
 4. Sulfadimethoxine (70 µg/mL)  
 5. Sulfaquinoxaline (90 µg/mL)  
 6. Nalidixic acid (290 µg/mL)