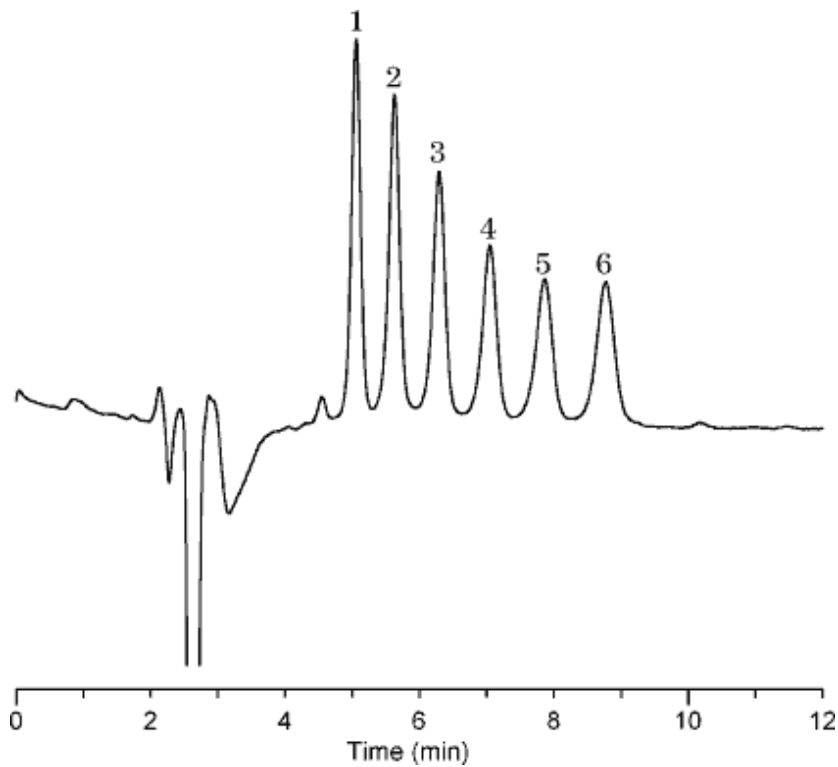


40. Malto oligosugars



| | | | |
|-----------------|---|---------|---|
| Column | : Inertsil NH2 5µm 150 × 4.6 mm I.D. | Solutes | : 1. Maltose (1.67 mg/mL) 2. Maltotriose (1.67 mg/mL) 3. Maltotetraose (1.67 mg/mL) 4. Maltopentaose (1.67 mg/mL) 5. Maltohexaose (1.67 mg/mL) 6. Maltoheptaose (1.67 mg/mL) |
| Column Cat. No. | : 5020-05546 | | |
| Eluent | : CH ₃ CN/H ₂ O = 55/45 | | |
| Flow rate | : 1.0 mL/min. | | |
| Col. Temp. | : 30°C | | |
| Detection | : RI | | |
| Injection Vol. | : | | |
| Sample | : Malto Oligosugars | | |