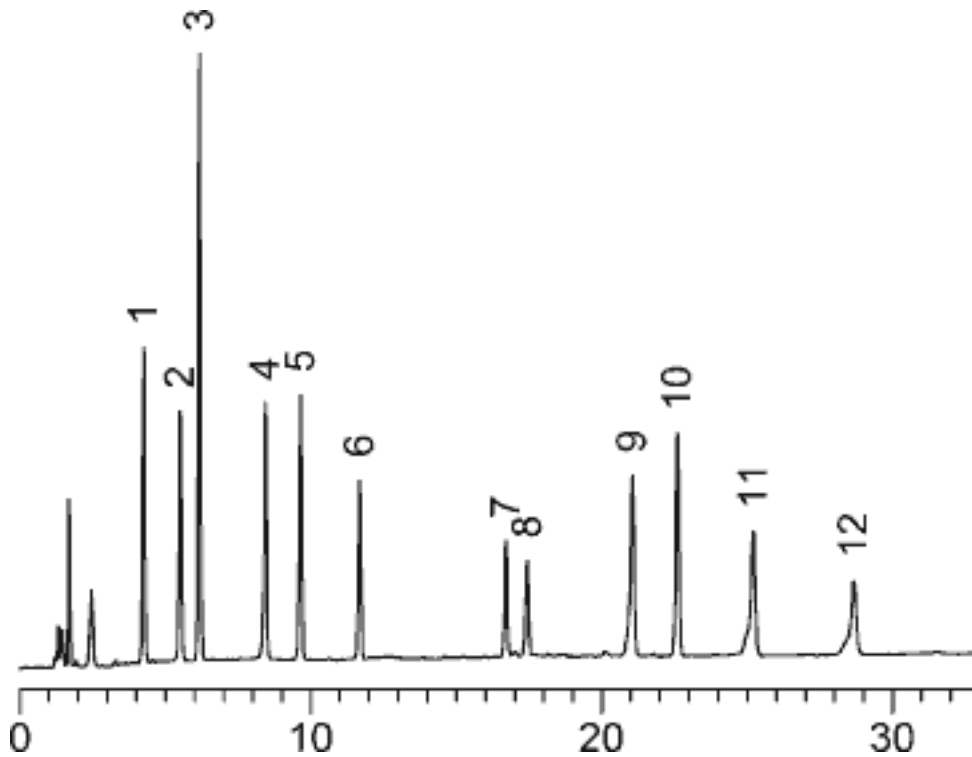


## 44. Dye



Column : Inertsil ODS-3V (5µm, 150 × 4.6 mm I.D.)

Column Cat. No. : 5020-01801

Eluent : A) 10 mM CH<sub>3</sub>COONH<sub>4</sub>/CH<sub>3</sub>CN = 95/5, v/v  
 B) 10 mM CH<sub>3</sub>COONH<sub>4</sub>/CH<sub>3</sub>CN = 50/50, v/v  
 A/B = 100/0 - 30 min - 0/100, v/v

Flow rate : 1.0 mL/min.

Col. Temp. : 40 °C

Detection : UV 254 nm

Sample : Dyes

- Solutes
1. Tartrazine
  2. Amaranth
  3. Indigocarmine
  4. New coccine
  5. Sunset yellow FCF
  6. Allura red AC
  7. Fast green FCF
  8. Brilliant blue FCF
  9. Erythrosine
  10. Acid red
  11. Phloxine
  12. Rose bengal