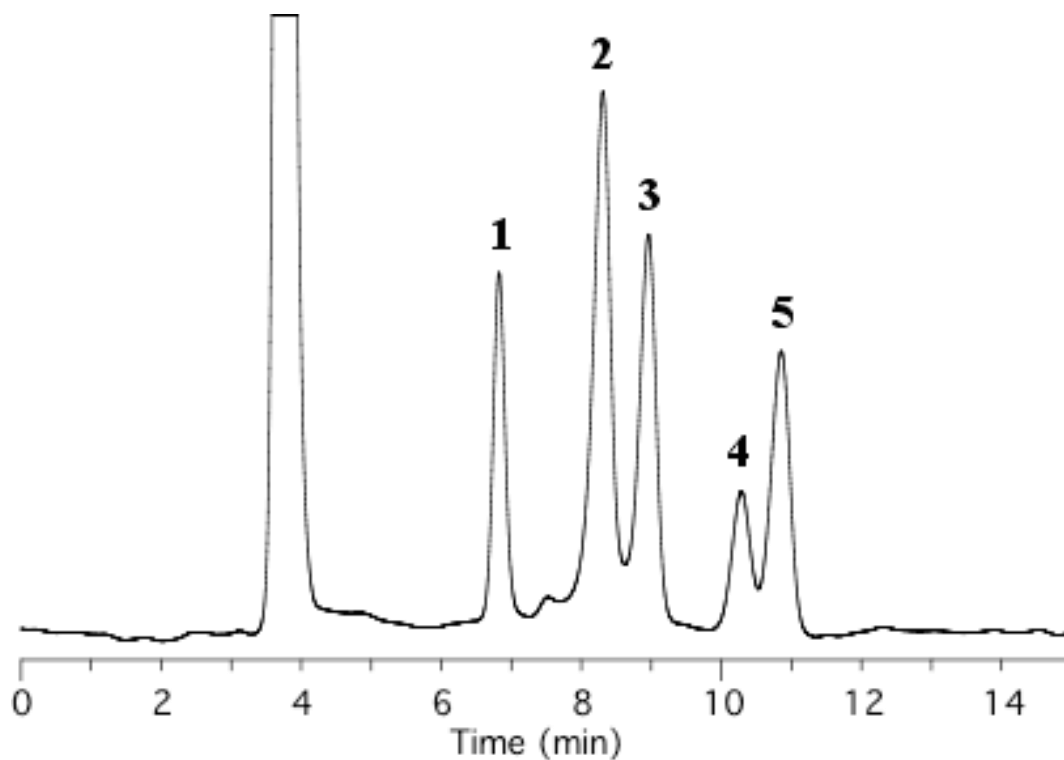


Analysis of Sugar Alcohols



Column	: Inertsil Diol 5 μ m 250 x 4.6 mm I.D.	Solutes	: 1. Erythritol 2. Xylitol 3. Fructose 4. Sorbitol 5. Mannitol
Column Cat. No.:	: 5020-05646		
Eluent	: A) CH ₃ CN B) H ₂ O A/B = 85/15, w/w		
Flow rate	: 1.0 mL/min.		
Col. Temp.	: 40°C		
Detection	: RI		
Injection Vol.	:		
Sample	:		