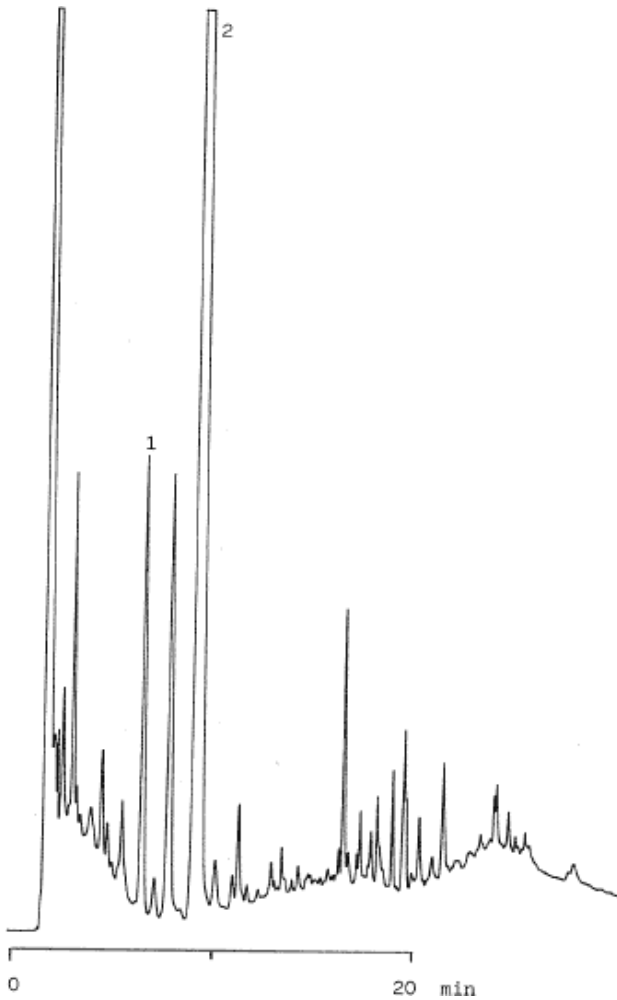


Coptidis rhizoma



Column : Inertsil ph
 5µm
 150 × 4.6 mmI.D.

Solutes : 1. Coptisine chloride
 2. Berberine chloride

Column Cat. No. : 5020-01301

Eluent : A:CH₃CN
 B:0.05% CF₃COOH
 A/B 25/75?(5min)→25/75
 →(15min)?90/10

Flow rate : 1.0 mL/min.

Col. Temp. : 40°C

Detection : UV 254 nm

Injection Vol. :

Sample :