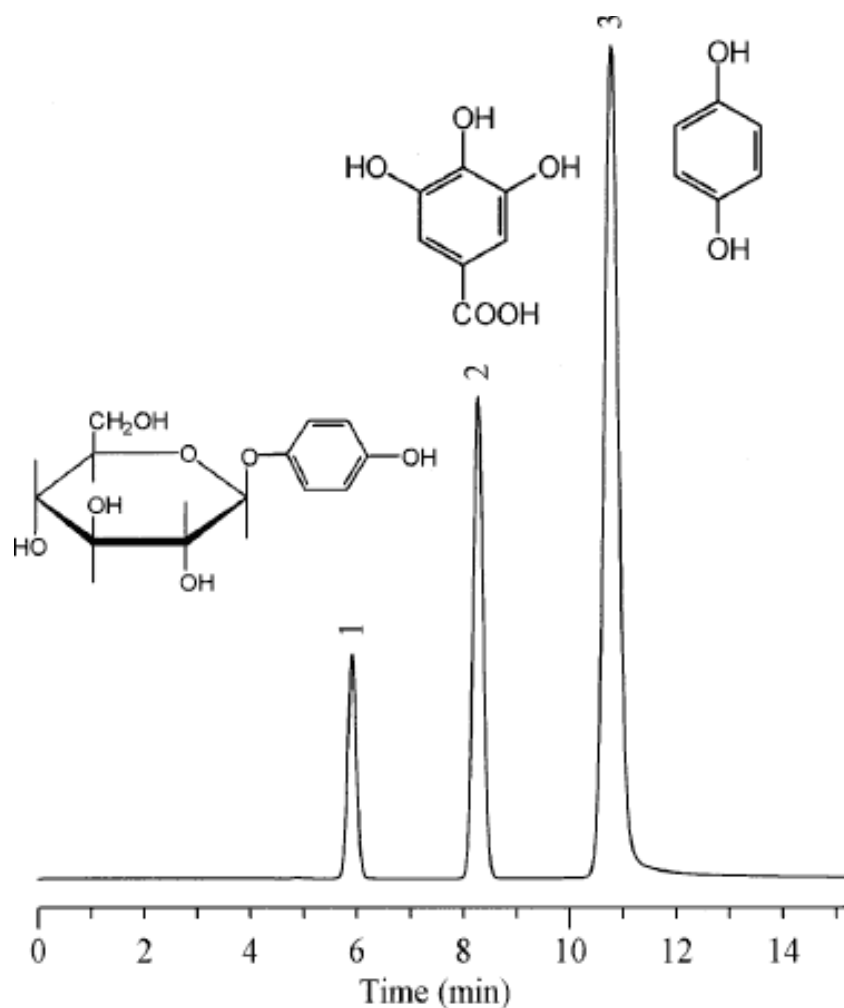


Components of Bearberry Leaf



Column : Inertsil ODS-3
5µm
150 × 4.6mmI.D.

Solutes

: 1. Arbutin (4.5µg)
2. Gallic acid (4.5µg)
3. Hydroquinone (4.5µg)

Column Cat. No. :

Eluent : H₂O / MeOH / 0.1N HCl (94 : 5 : 1)

Flow rate : 1.0 mL/min.

Col. Temp. : 25°C

Detection : UV 280 nm

Injection Vol. :

Sample : 1. Arbutin (4.5µg)
2. Gallic acid (4.5µg)
3. Hydroquinone (4.5µg)