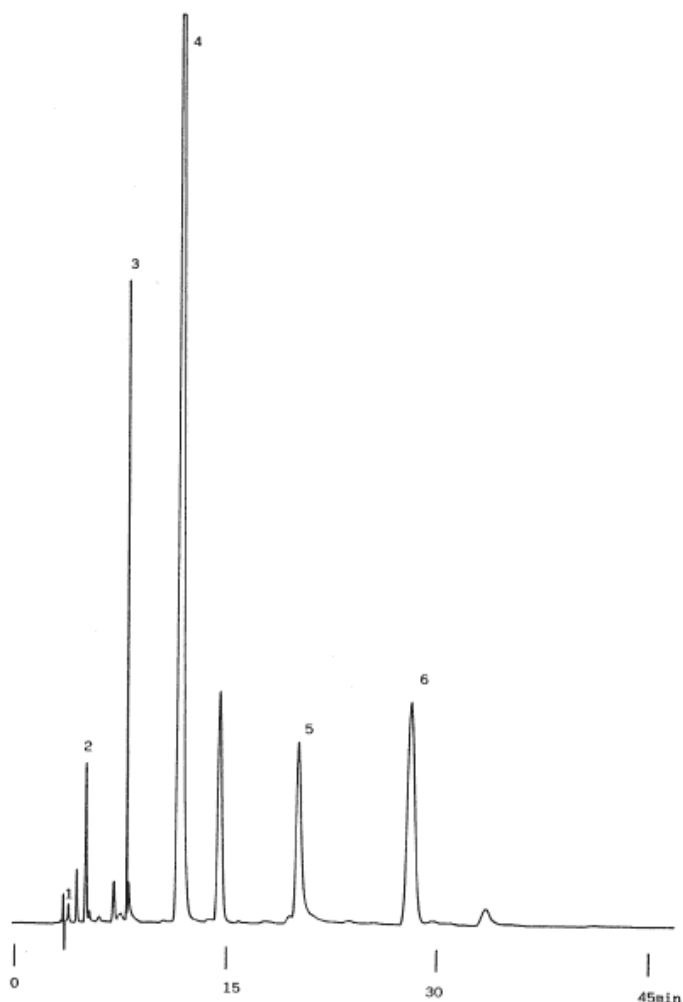


Catechins in Green tea

Data No. LA219-0000



Column : Inertsil ODS-2
5 μ m
10 \times 4.0(guard)+250 \times 4.6 mmI.D.

Column Cat. No. : 5020-01102

Eluent : CH₃CN/CH₃COOC₂H₅/0.1% H₃PO₄=85/20/895

Flow rate : 1.0 mL/min.

Col. Temp. : 40°C

Detection : UV 280 nm

Injection Vol. :

Sample :

Solutes : 1. Gallic acid
2. (-)-Epigallocatechin
3. (-)-Epicatechin
4. (-)-Epigallocatechin gallate
5. Homocatechol
6. (-)-Epicatechin gallate