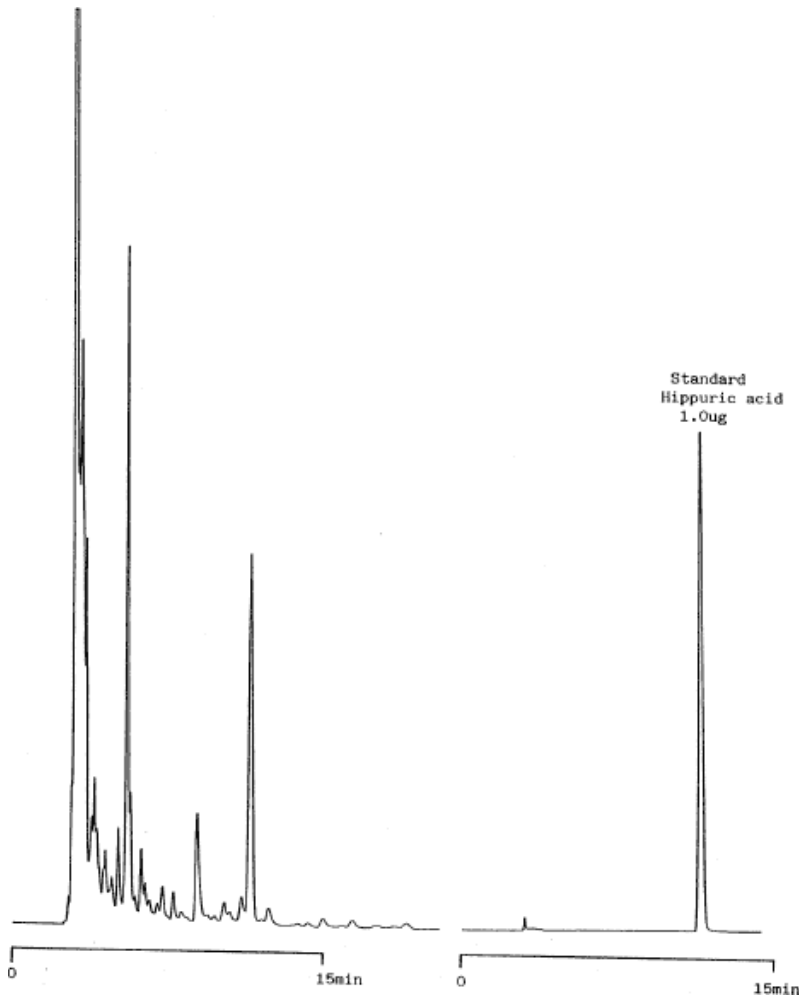


# Hippuric acid in Urine



Column	: Inertsil C8 5µm 250 × 4.6 mmI.D.	Solutes	: 1. Left Chromatogram: Urine 2. Right Chromatogram: Hippuric acid
Column Cat. No.	: 5020-01202		
Eluent	: CH <sub>3</sub> CN/1mM IPCC-05+0.1% H <sub>3</sub> PO <sub>4</sub> =15/85 IPCC-05:Sodium Pentanesulfonate		
Flow rate	: 1.0 mL/min.		
Col. Temp.	: 40°C		
Detection	: UV 254 nm		
Injection Vol.	:		
Sample	: Metabolite		