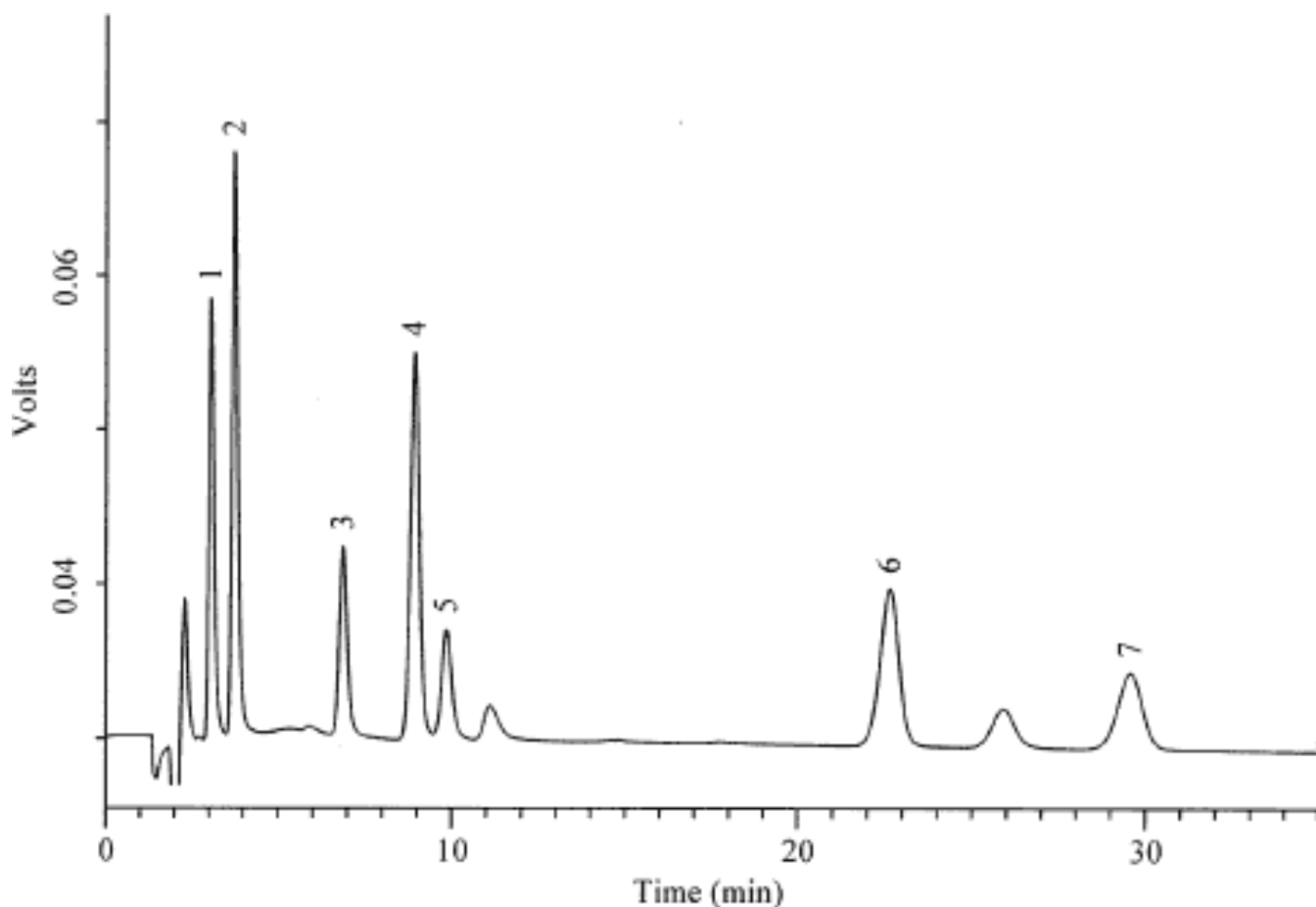


Analysis of Catechol amines



Column	: Inertsil ODS-3 5 μ m 150 \times 1.5mm I.D.	Solutes	: 1. 3,4-Dihydroxymandelic acid(DOMA)(100ng/mL) 2. 3,4-Dihydroxyphenylglycol(DHPG)(100ng/mL) 3. Vanilmandelic acid(VMA)(100ng/mL) 4. Norepinephrine(NE)(100ng/mL) 5. 3-Methoxy-4-hydroxyphenylglycol (MHPG)(100ng/mL) 6. 3,4-Dihydroxybenzylamine Hydrobromide (DHBA)(100ng/mL) 7. Normetanephrine(NM)(100ng/mL)
Column Cat. No. :			
Eluent	: 50mM phosphoric acid, 50mM citric acid, 75mg/L SOS, 40mg/L EDTA(pH2.3)		
Flow rate	: 0.1 mL/min.		
Col. Temp.	: 30°C		
Detection	: ECD W1;700mV W2;0mV vs. Ag/AgCl 100nA/V (Glassy carbon)		
Injection Vol.	: 1 μ L		
Sample	: Catecholamines		