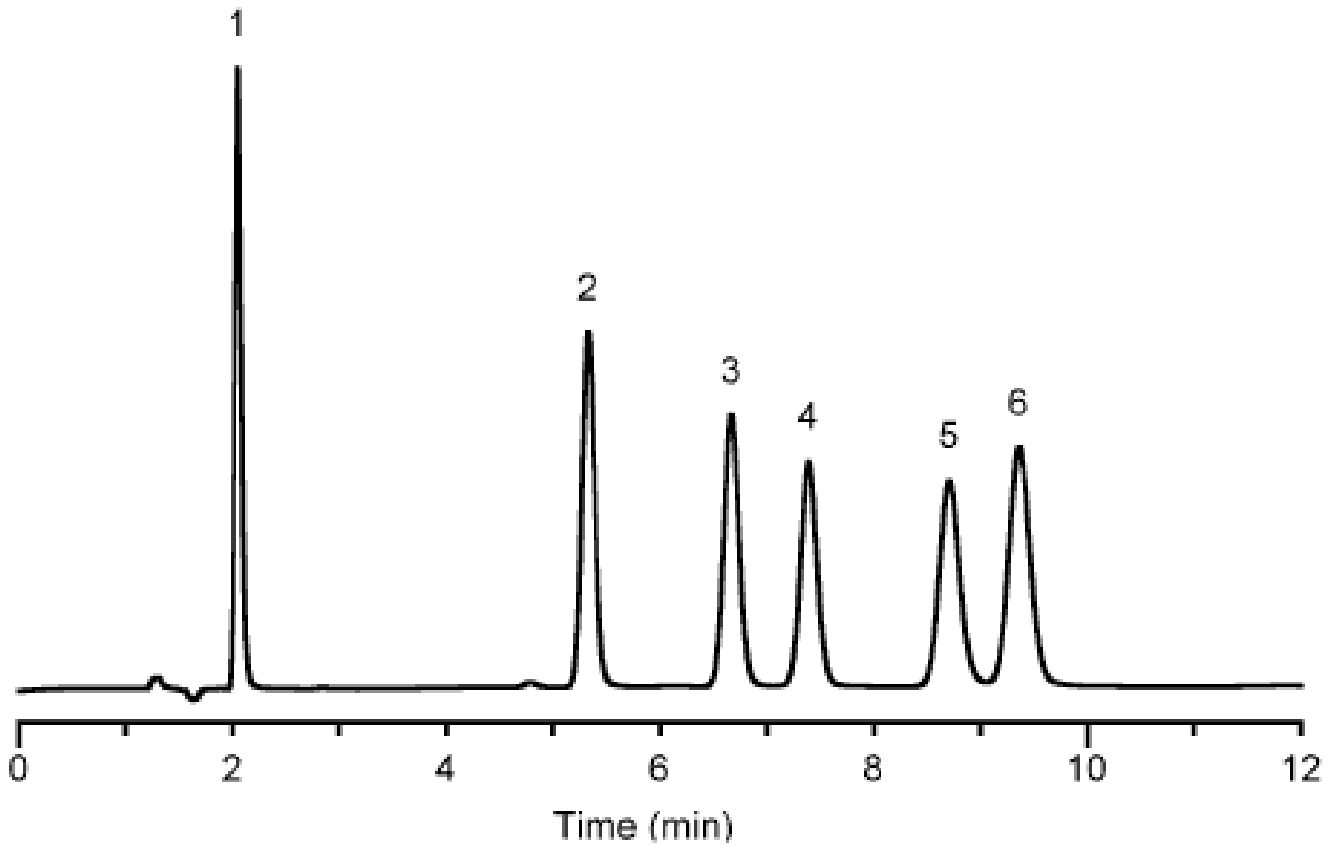


Analysis of Estrogens



Column	: Inertsil ODS-3V 5µm 150 × 4.6mm I.D.	Solutes	: 1. Estriol 2. Estradiol 3. Ethynylestradiol 4. Estrone 5. Diethylstilbestrol 6. Hexestrol
Column Cat. No.	:		
Eluent	: Acetonitrile / Water = 50 / 50		
Flow rate	: 1.0mL/min		
Col. Temp.	: 40°C		
Detection	: UV 220 nm		
Injection Vol.	: 1µL		
Sample	: Estriol (1mg/mL) β - Estradiol (1mg/mL) Ethynylestradiol (1mg/mL) Estrone (1mg/mL) Diethylstilbestrol (0.5mg/mL) Hexestrol (0.5mg/mL)		