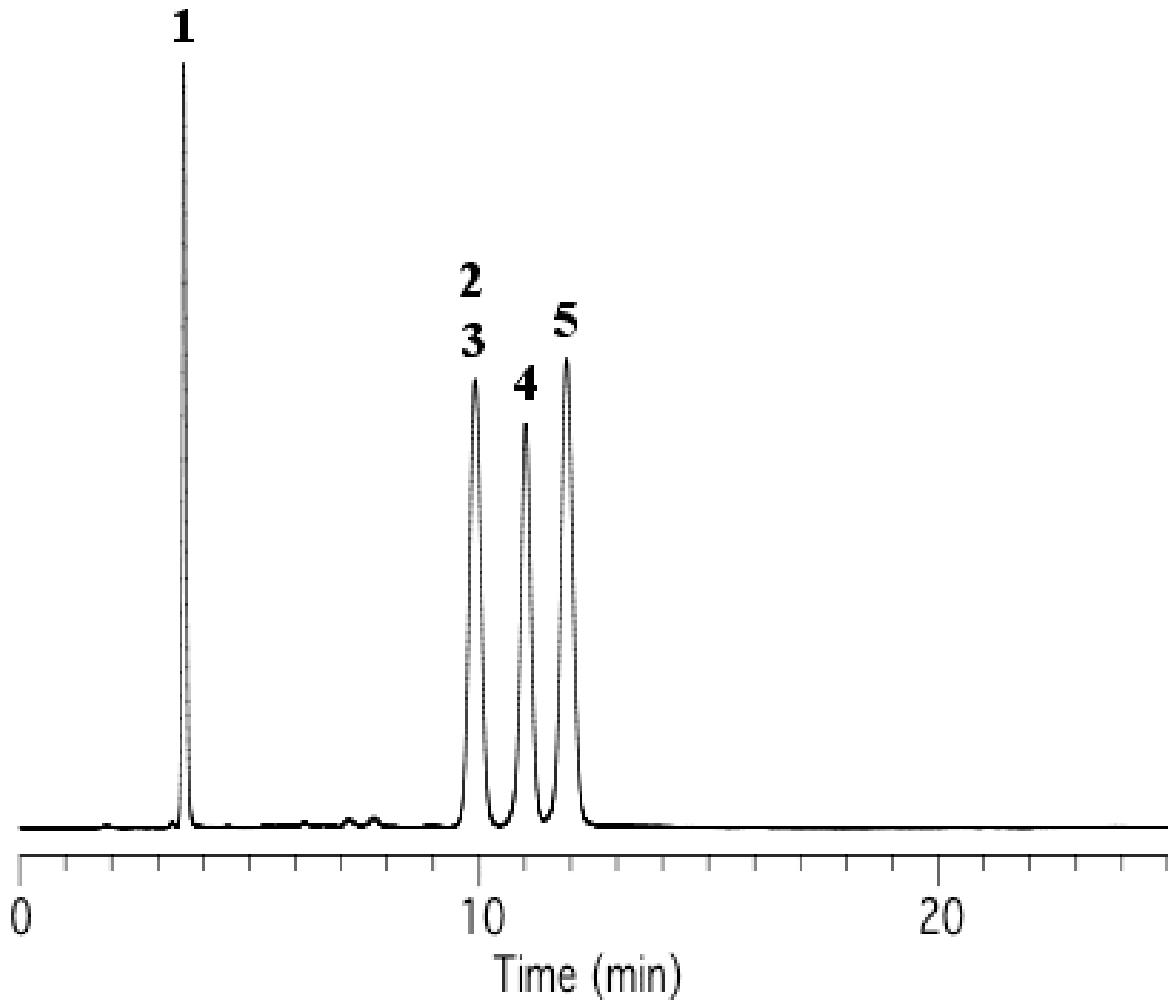


Analysis of Steroid Hormones



Column	:Inertsil SIL-100A 5 µm 150 x 4.6 mm I.D.	Solutes	: 1. Progesterone 2. Corticosterone 3. Cortisone 4. Prednisone 5. Prednisolone
Column Cat. No.	: 5020-01711		
Eluent	:A) n-Hexane B) Ethanol A/B = 85/15, w/w		
Flow rate	:1.0 mL/min.		
Col. Temp.	:40°C		
Detection	:UV 254 nm		
Injection Vol.	:		
Sample	:		