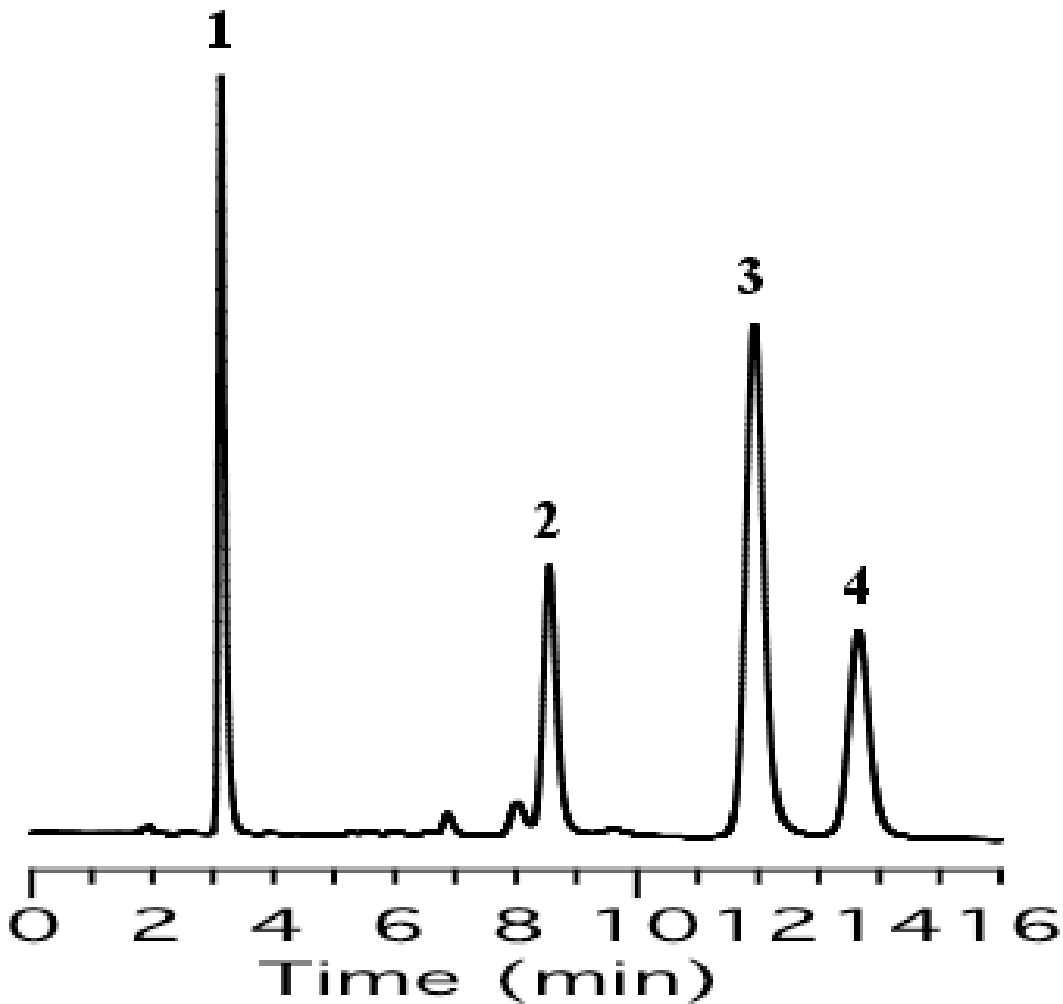


Analysis of Steroid Hormones



Column	: Inertsil CN-3 5 μ m 150 x 4.6 mm I.D.	Solutes	: 1. Progesterone 2. Corticosterone 3. Prednisone 4. Prednisolone
Column Cat. No.	: 5020-01940		
Eluent	: A) n-Hexane B) Ethanol A/B = 90/10, v/v		
Flow rate	: 1.0 mL/min.		
Col. Temp.	: 40°C		
Detection	: UV 254 nm		
Injection Vol.	:		
Sample	:		