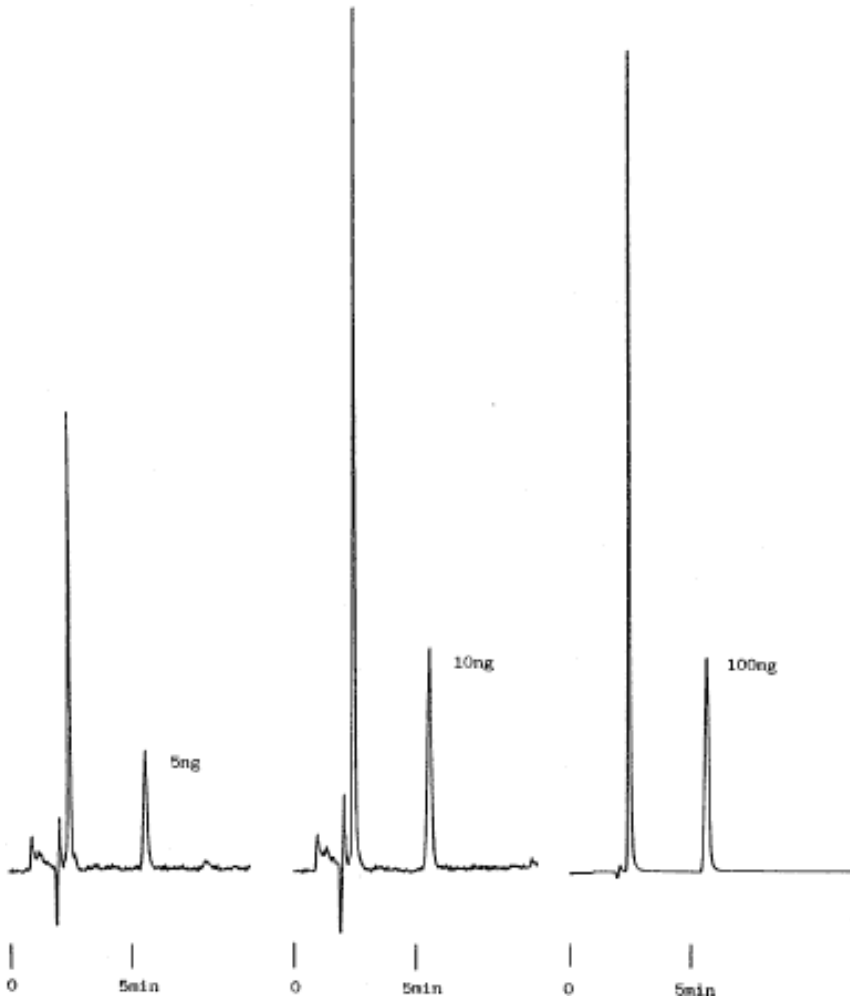


# Mesomyl



Column : Inertsil ODS-2  
 5µm  
 150 × 4.6mmI.D.

Column Cat. No. : 5020-01101

Eluent : CH<sub>3</sub>CN/H<sub>2</sub>O=35/65

Flow rate : 1.0 mL/min.

Col. Temp. : 40°C

Detection : UV 300nm

Injection Vol. :

Sample :

Solutes : Methomyl