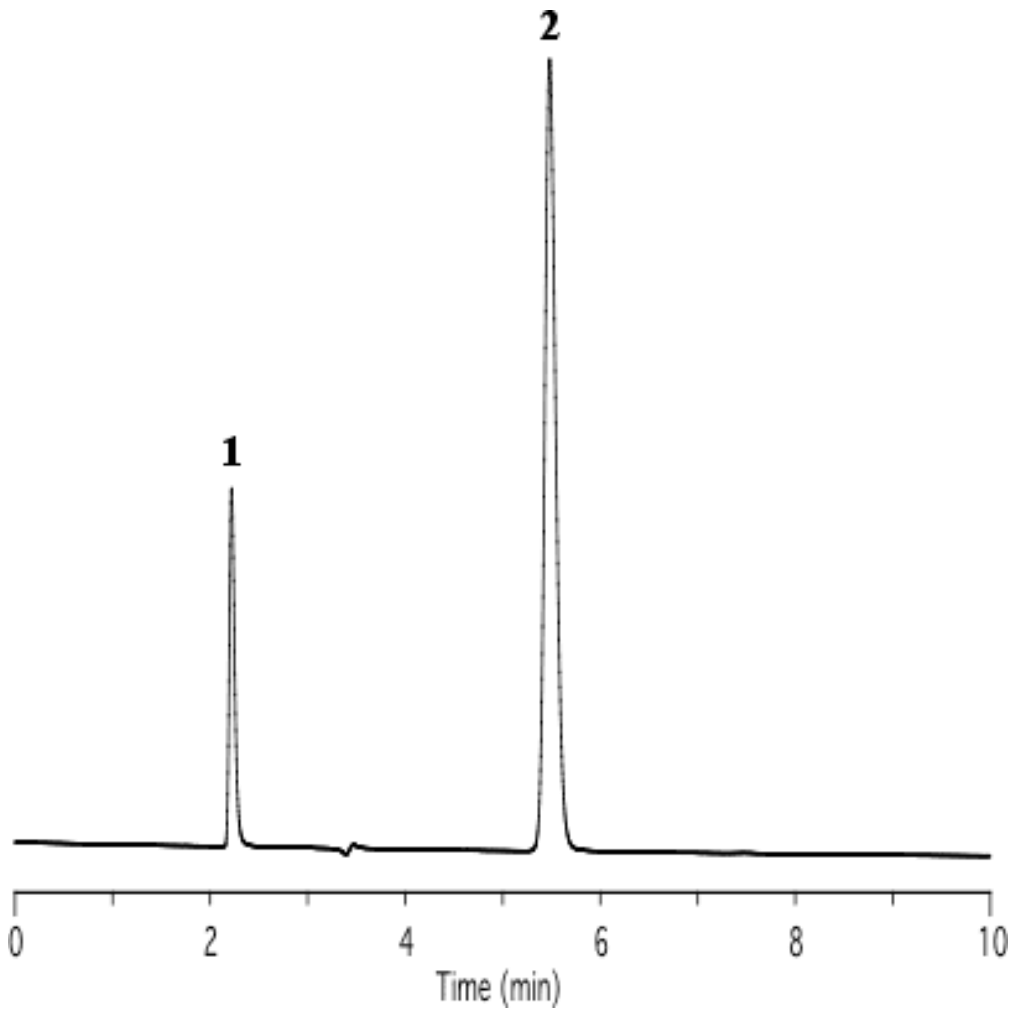


Analysis of Oxine-Copper



Column	: Inertsil CN-3 5 μ m 250 x 4.6 mm I.D.	Solutes	: 1. Oxine-copper 2. Caffeine
Column Cat. No.	:		
Eluent	: A) CH ₃ CN B) 20 mM H ₃ PO ₄ A/B = 5/95, v/v		
Flow rate	: 1.0 mL/min.		
Col. Temp.	: 40°C		
Detection	: UV 254 nm		
Injection Vol.	:		
Sample	:		