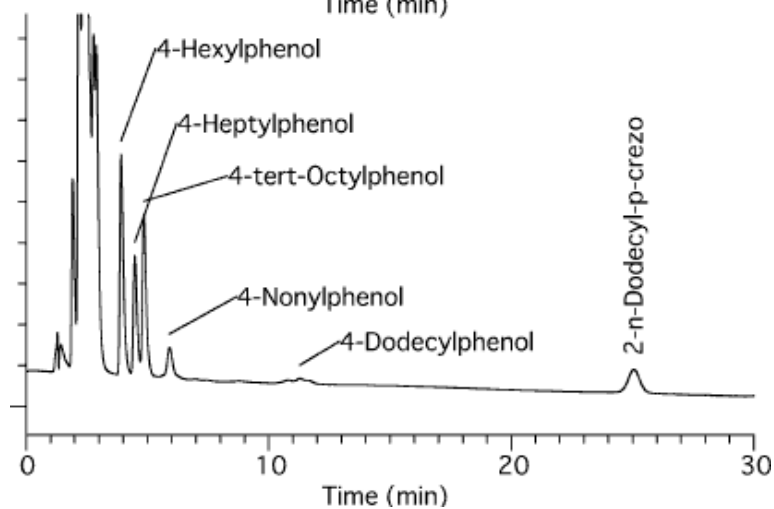
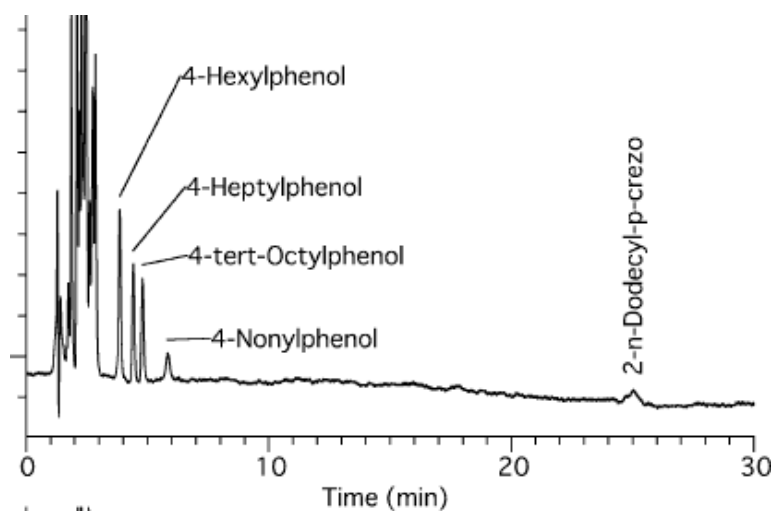


## Analysis of Alkylphenols



Column : Inertsil ODS-3  
5 $\mu$ m  
150  $\times$  4.6 mmI.D.

Column Cat. No. : 5020-01731

Eluent : CH<sub>3</sub>CN/100 mM Perchlorate buffer (pH 2.5; HClO<sub>4</sub>) =  
80/20

Flow rate : 1.0 mL/min.

Col. Temp. : 40°C

Detection : Upper Chromatogram: UV210 nm  
Lower Chromatogram: ECD 1200 mV vs. Ag/AgCl

Injection Vol. : 1 $\mu$ L

Sample : Alkylphenol

Solutes : 1. 4-Hexylphenol (1ppm)  
2. 4-Heptylphenol (1ppm)  
3. 4-tert-Octylphenol (1ppm)  
4. 4-Nonylphenol (1ppm)  
5. 4-Dodecylphenol (1ppm)  
6. 2-n-Dodecyl-p-cresol (1ppm)