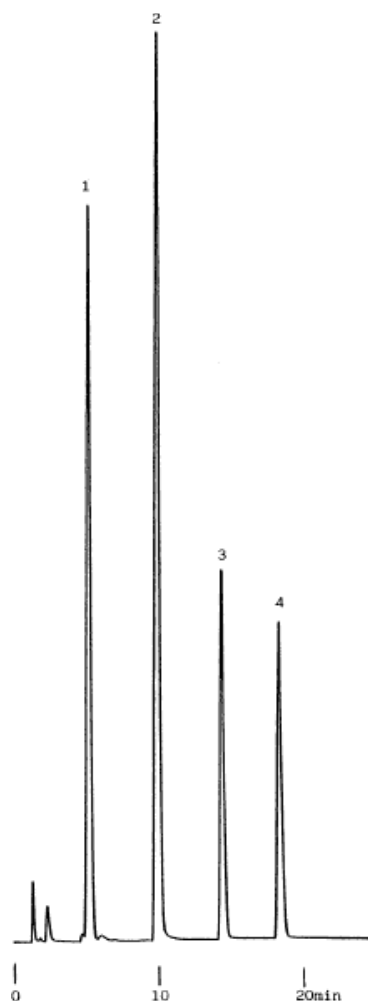


OPA-Amines



Column : Inertsil ODS-2
 5 μ m
 150 \times 4.6 mm I.D.

Column Cat. No. : 5020-01101

Eluent : A: CH₃CN/H₂O=25/75
 B: CH₃CN/H₂O=50/50
 A/B 100/0 \rightarrow (15min) \rightarrow 0/100

Flow rate : 1.0 mL/min.

Col. Temp. : 40°C

Detection : FL Ex 340nm Em 455nm

Injection Vol. :

Sample :

Solutes : 1. n-Butylamine(OPA deriv.)
 2. n-Hexylamine(OPA deriv.)
 3. n-Octylamine(OPA deriv.)
 4. n-Decylamine(OPA deriv.)